

Condair RS II

SPARE PARTS LIST

Subject to change!



Proprietary Notice

This document and the information disclosed herein are proprietary data of Condair Ltd. Neither this document nor the information contained herein shall be reproduced, used, or disclosed to others without the written authorization of Condair Ltd., except to the extent required for installation or maintenance of recipient's equipment.

Liability Notice

Condair Ltd. does not accept any liability for installations of humidity equipment installed by unqualified personnel or the use of parts/components/equipment that are not authorized or approved by Condair Ltd.

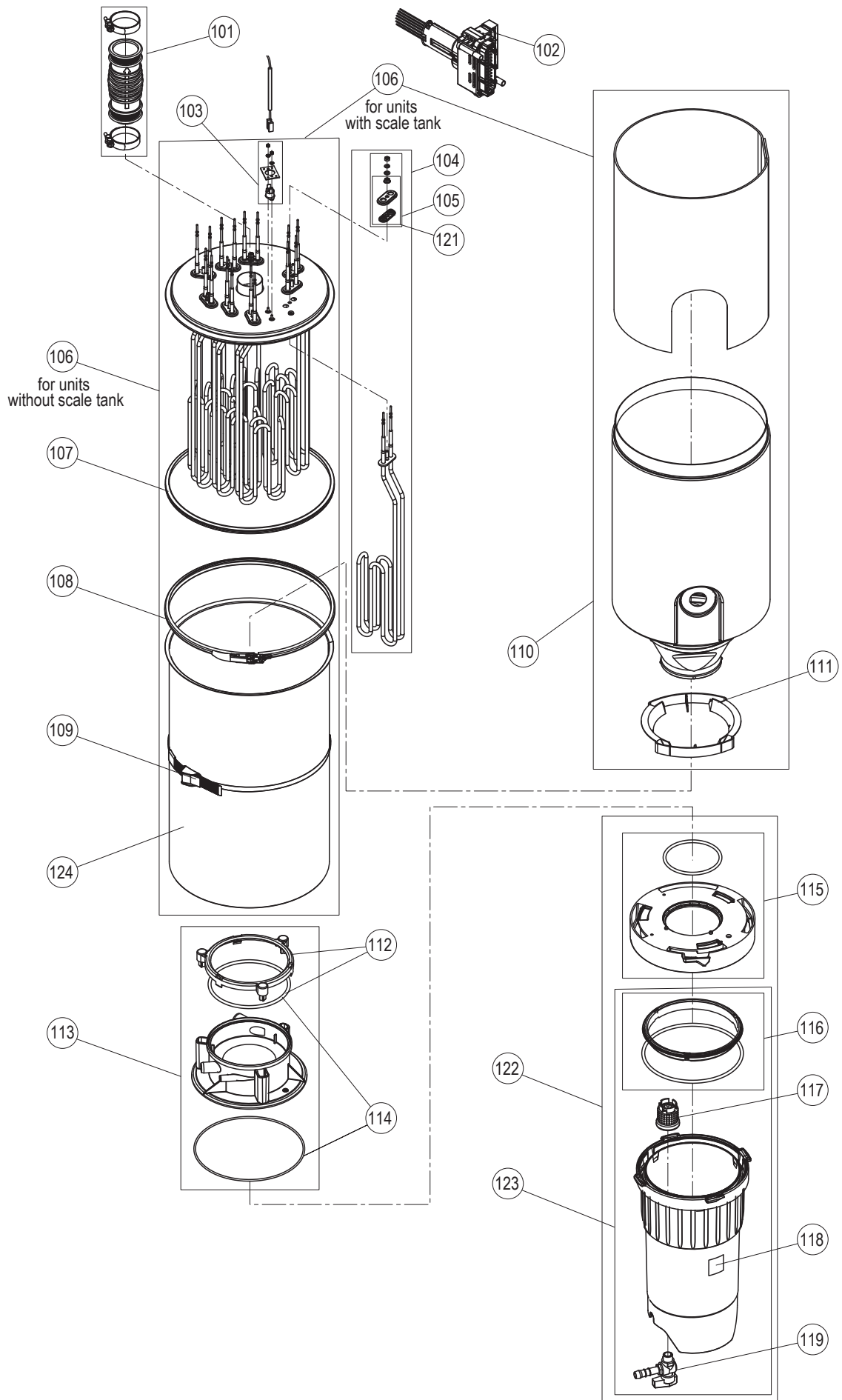
Copyright Notice

© Condair Ltd. All rights reserved.

The contents of this document are subject to change without notice.

Contents

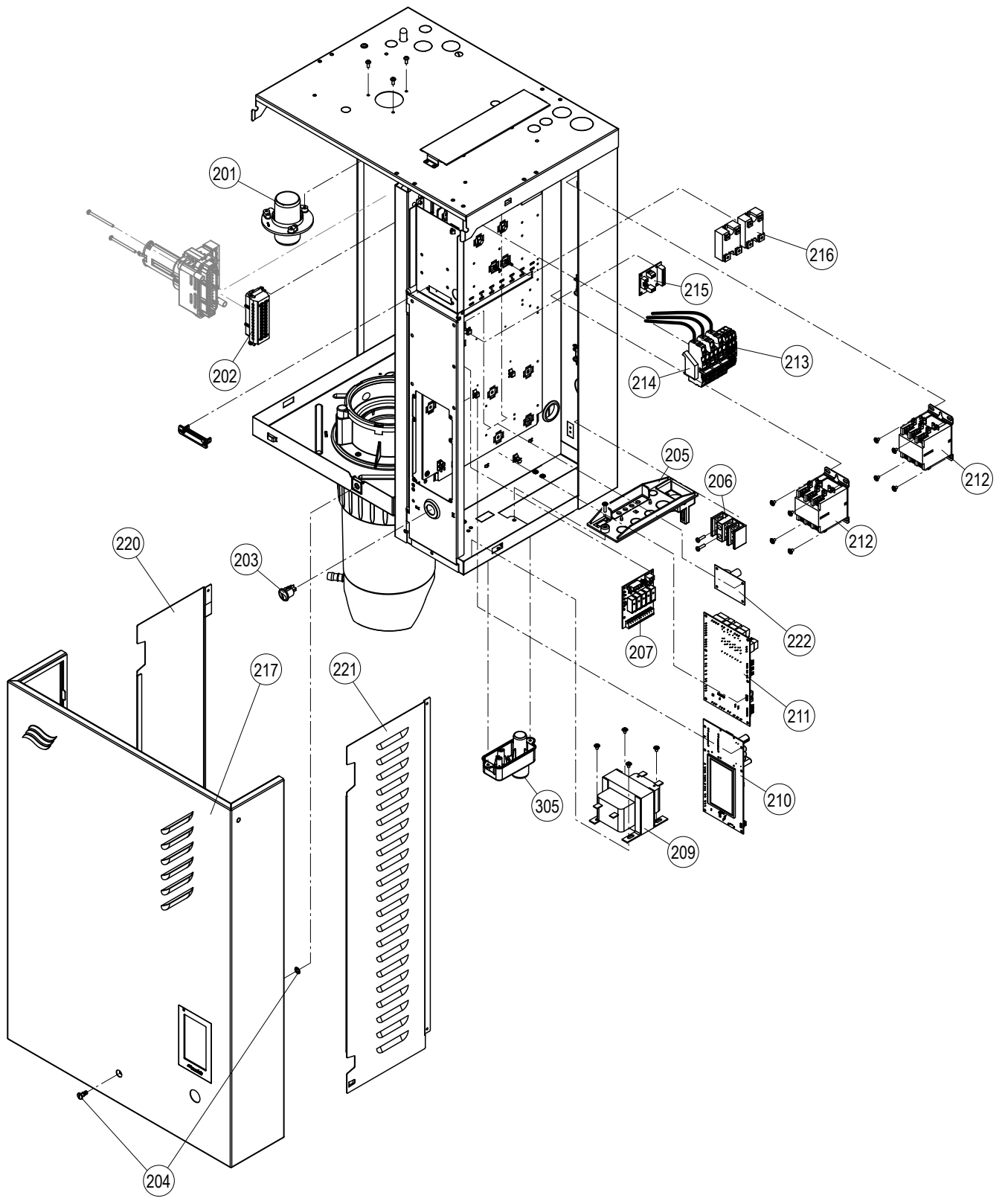
Steam tank parts – Condair RS 10-20	3
Steam tank parts – Condair RS 30-180	4
Electrical and housing parts – Condair RS 10-20	8
Electrical and housing parts – Condair RS 30-180	9
Plumbing parts – Condair RS 10-20	11
Plumbing parts – Condair RS 30-180	12

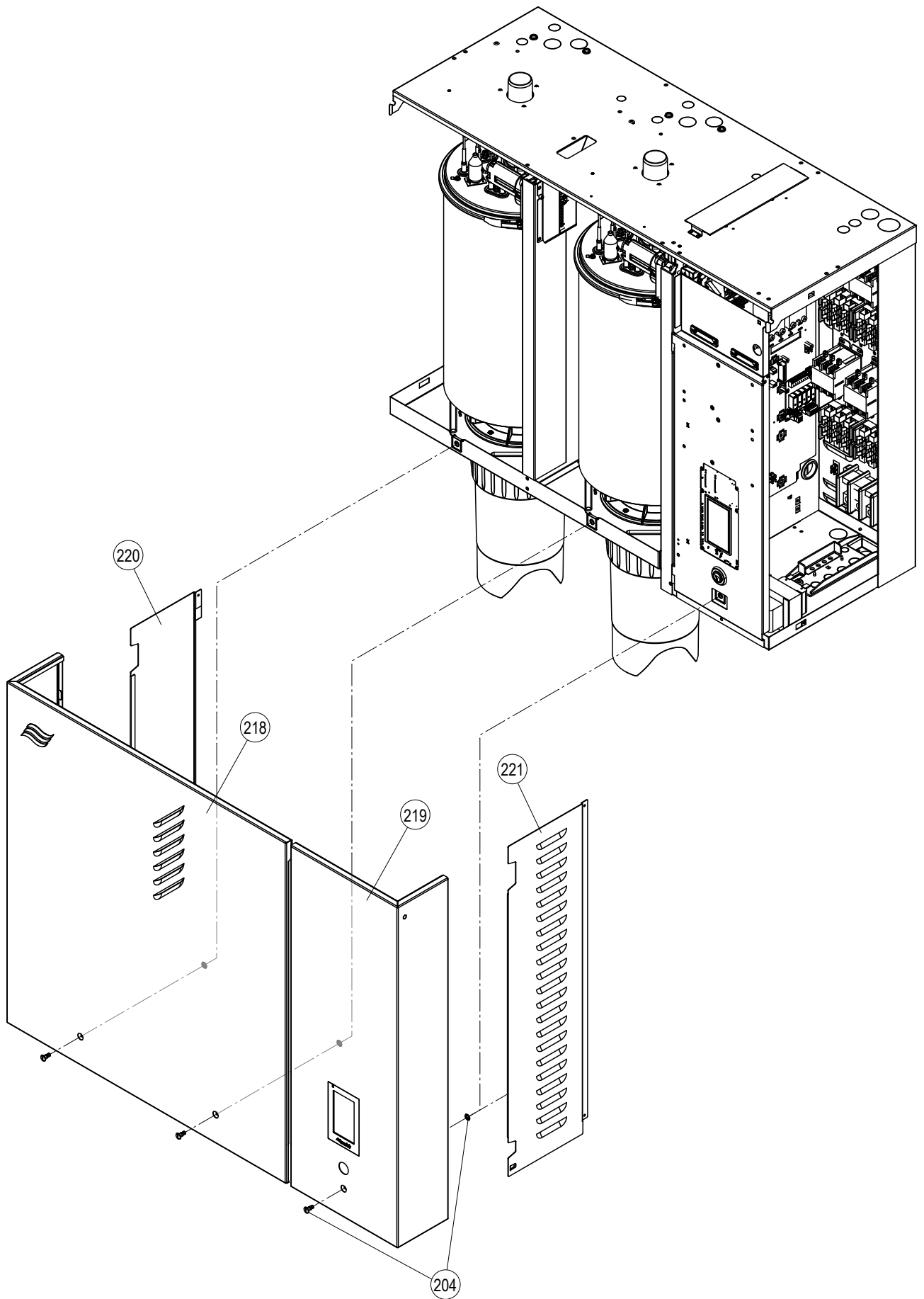


Steam tank parts – Condair RS 30-180

Housing Size		MEDIUM												LARGE				Item No.									
		30						45				65		90		90			130		180						
Pos	Item	Unit type (lb/hr)																									
		Voltage																									
		208V1	220-240V1	440-480V1	550-600V1	208V3	220-240V3	440-480V3	550-600V3	208V3	220-240V3	440-480V3	550-600V3	208V3	220-240V3	440-480V3	550-600V3	208V3	220-240V3	440-480V3	550-600V3	208V3	220-240V3	440-480V3	550-600V3		
101	SP Steam Outlet Hose	1	1	1	1	1	1	1	1	1	1	1	1	1	1	1	1	2	2	2	2	2	2	2	2	2	2584885
102	SP Plumbing Element Plug 16 pol	1	1	1	1	1	1	1	1	1	1	1	1	1	1	1	1				2						2584850
	SP Plumbing Element Plug 24 pol									1	1	1	1	1	1	1	1	2	2	2	2	2	2	2	2	2	2584851
103	SP Thermostat	1	1	1	1	1	1	1	1	1	1	1	1	1	1	1	1	2	2	2	2	2	2	2	2	2	2584888
104	SP Heating Element 2000 W				6																						2584866
	SP Heating Element 3630 W			4			3									9									18		2584868
	SP Heating Element 3650 W		4				3				6			9							12			18			2584869
	SP Heating Element 3300 W	4	3				3		6				9				12	18									2584875
	SP Heating Element 2500 W								6				9				12	18									2584867
	SP Heating Element 2720 W									9	6			9										18			2584870
105	SP Heating element gasket kit 3 pcs.	1	1	1	1	1	1	1	1	1	1	1	1	1	1	1	1	1	1	1	1	1	1	1	1	1	2584848
106	Tanks without scale management																										
	SP Large Tank 16.0 Ω/4 elements, D	1																									2584908
	SP Large Tank 26.5 Ω/6 elements, E				1																						2584909
	SP Large Tank 16.0 Ω/3 elements, I		1				1																				2584913
	SP Large Tank 21.5 Ω/4 elements, O			1																							2584919
	SP Large Tank 21.5 Ω/3 elements, Q							1																			2584921
	SP Large Tank 33.7 Ω/4 elements, V				1																						2584926
	SP Large Tank 33.7 Ω/3 elements, X							1																			2584932
	SP Large Tank 16.0 Ω/6 elements, F								1								2										2584910
	SP Large Tank 21.2 Ω/6 elements, J									1								2									2584914
	SP Large Tank 45.0 Ω/9 elements, R									1				1										2			2584922
	SP Large Tank 45.0 Ω/6 elements, Y										1																2584933
	SP Large Tank 16.0 Ω/9 elements, G											1						2									2584911
	SP Large Tank 21.2 Ω/9 elements, K												1								2						2584915
	SP Large Tank 21.5 Ω/6 elements, S													1								2					2584923
	SP Large Tank 21.5 Ω/9 elements, T															1									2		2584924
	SP Large Tank 33.7 Ω/9 elements, Z																1								2		2584934
106	Tanks with scale management																										
	SP Large Tank 16.0 Ω/4 elements, D-SC	1																									2584938
	SP Large Tank 36.5 Ω/6 elements, E-SC				1																						2584939
	SP Large Tank 16.0 Ω/3 elements, I-SC		1				1																				2584943
	SP Large Tank 21.5 Ω/4 elements, O-SC			1																							2584949
	SP Large Tank 21.5 Ω/3 elements, Q-SC							1																			2584951
	SP Large Tank 33.7 Ω/4 elements, V-SC				1																						2584956
	SP Large Tank 33.7 Ω/3 elements, X-SC							1																			2584958
	SP Large Tank 16.0 Ω/6 elements, F-SC								1									2									2584940
	SP Large Tank 21.2 Ω/6 elements, J-SC									1									2								2584944
	SP Large Tank 45.0 Ω/9 elements, R-SC										1														2		2584952
	SP Large Tank 45.0 Ω/6 elements, Y-SC											1															2584959
	SP Large Tank 16.0 Ω/9 elements, G-RS												1								2						2584941
	SP Large Tank 21.2 Ω/9 elements, K-SC													1								2					2584945
	SP Large Tank 21.5 Ω/6 elements, S-SC														1								2				2584953
	SP Large Tank 21.5 Ω/9 elements, T-SC																1								2		2584954
	SP Large Tank 33.7 Ω/9 elements, Z-SC																	1								2	2584960
107	SP Tank Lid Gasket 30-180 lb/hr	1	1	1	1	1	1	1	1	1	1	1	1	1	1	1	1	2	2	2	2	2	2	2	2	2	2584844
108	SP Tank Lid Clamp 30-180 lb/hr	1	1	1	1	1	1	1	1	1	1	1	1	1	1	1	1	2	2	2	2	2	2	2	2	2	2584828
109	SP Large Tank Strap, 30-180 lb/hr	1	1	1	1	1	1	1	1	1	1	1	1	1	1	1	1	2	2	2	2	2	2	2	2	2	2584822
110	SP SC Tank Liners 30-180 lb/hr	1	1	1	1	1	1	1	1	1	1	1	1	1	1	1	1	2	2	2	2	2	2	2	2	2	2584830
111	SP SC Tank Liner Retaining Ring	1	1	1	1	1	1	1	1	1	1	1	1	1	1	1	1	2	2	2	2	2	2	2	2	2	2584843
112	SP Snap Ring for Tank Base	1	1	1	1	1	1	1	1	1	1	1	1	1	1	1	1	2	2	2	2	2	2	2	2	2	2584883

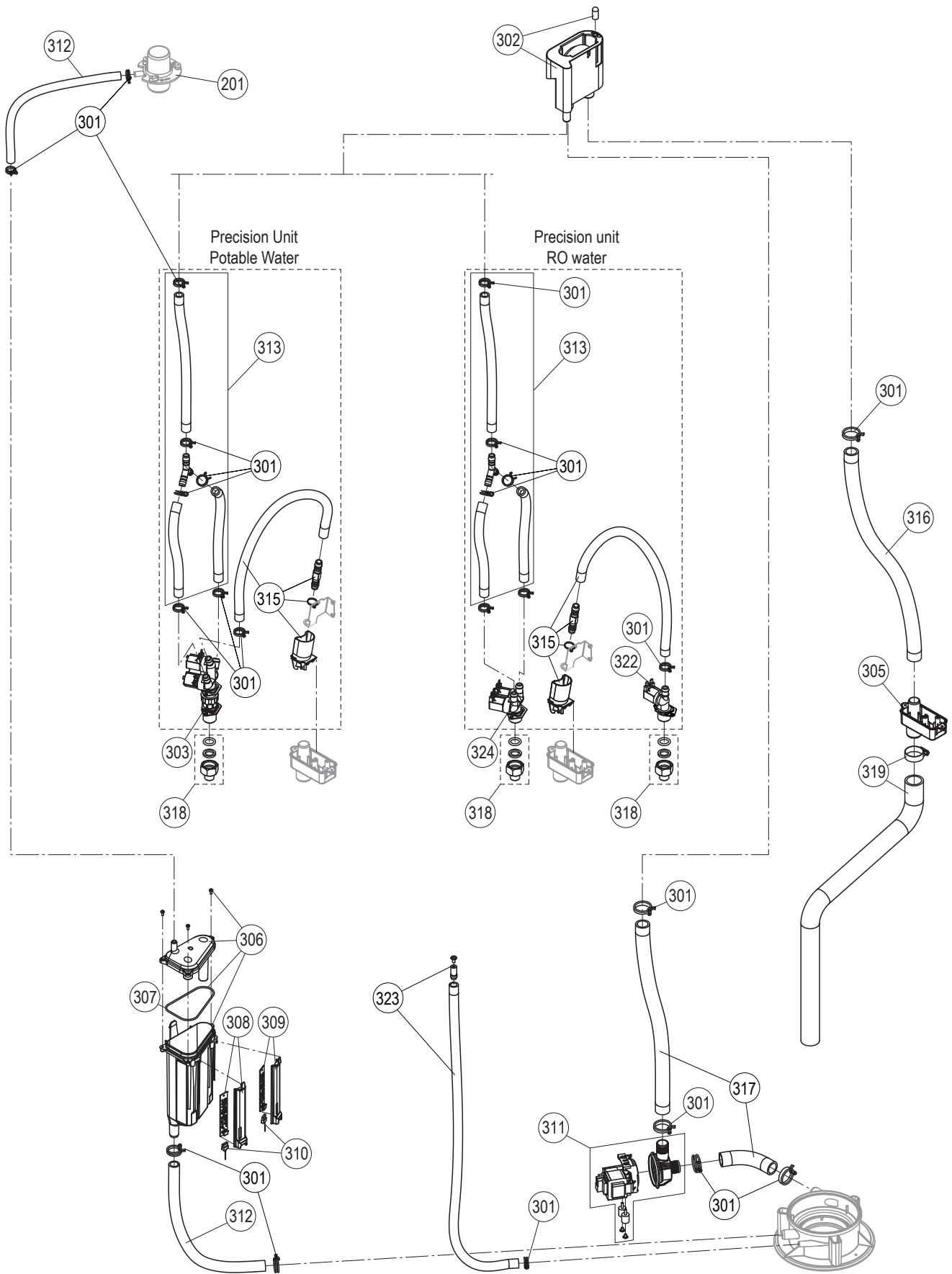
Housing Size		MEDIUM												LARGE				Item No.								
		30						45				65		90		90			130		180					
Unit type (lb/hr)																										
Voltage																										
Pos	Item	208V1	220-240V1	440-480V1	550-600V1	208V3	220-240V3	440-480V3	550-600V3	208V3	220-240V3	440-480V3	550-600V3	208V3	220-240V3	440-480V3	550-600V3	208V3	220-240V3	208V3	220-240V3	440-480V3	550-600V3	440-480V3	550-600V3	
113	SP Tank Base, SC 10-180 lb/hr	1	1	1	1	1	1	1	1	1	1	1	1	1	1	1	1	2	2	2	2	2	2	2	2	2584824
	SP Tank Base 10- 180 lb/hr	1	1	1	1	1	1	1	1	1	1	1	1	1	1	1	1	2	2	2	2	2	2	2	2	2584826
114	SP Tank Base Gasket Kit	1	1	1	1	1	1	1	1	1	1	1	1	1	1	1	1	2	2	2	2	2	2	2	2	2584847
115	SP Scale Tank Connection Ring	1	1	1	1	1	1	1	1	1	1	1	1	1	1	1	1	2	2	2	2	2	2	2	2	2599511
116	SP SC Tank Snap Ring Sealing Kit	1	1	1	1	1	1	1	1	1	1	1	1	1	1	1	1	2	2	2	2	2	2	2	2	2599512
117	SP SC Tank Drain Strainer	1	1	1	1	1	1	1	1	1	1	1	1	1	1	1	1	2	2	2	2	2	2	2	2	2584837
118	SP Temp Indicator Scale Tank	1	1	1	1	1	1	1	1	1	1	1	1	1	1	1	1	2	2	2	2	2	2	2	2	2584886
119	SP SC Tank Drain Valve Kit	1	1	1	1	1	1	1	1	1	1	1	1	1	1	1	1	2	2	2	2	2	2	2	2	2584838
121	SP Tank Lid Plug	2	3	2	2	3	3	3																		2584863
122	SP Scale Tank and Connection Ring	1	1	1	1	1	1	1	1	1	1	1	1	1	1	1	1	2	2	2	2	2	2	2	2	2599518
123	SP Scale Tank Replacement	1	1	1	1	1	1	1	1	1	1	1	1	1	1	1	1	2	2	2	2	2	2	2	2	2599513
124	SP RS Boiling Tank Large	1	1	1	1	1	1	1	1	1	1	1	1	1	1	1	1	2	2	2	2	2	2	2	2	2597305





Electrical and housing parts – Condair RS 30-180

Housing Size		MEDIUM												LARGE				Item No.										
		30						45				65		90		90			130		180							
Pos	Item	Unit type (lb/hr)												Voltage				Item No.										
		208V1	220-240V1	440-480V1	550-600V1	208V3	220-240V3	440-480V3	550-600V3	208V3	220-240V3	440-480V3	550-600V3	208V3	220-240V3	440-480V3	550-600V3		208V3	220-240V3	440-480V3	550-600V3						
201	SP Steam Outlet Adapter	1	1	1	1	1	1	1	1	1	1	1	1	1	1	1	2	2	2	2	2	2	2	2	2	2	2584884	
202	SP Heating Plug 3																											2584859
	SP Heating Plug 4																											2584860
	SP Heating Plug 5																											2584861
	SP Heating Plug 6																											2584862
203	SP 24V Power Switch	1	1	1	1	1	1	1	1	1	1	1	1	1	1	1	1	1	1	1	1	1	1	1	1	1	1	2584879
204	SP Door Lock 2 pcs.	1	1	1	1	1	1	1	1	1	1	1	1	1	1	1	1	2	2	2	2	2	2	2	2	2	2	2584902
205	SP Cable Strain Relief Plate	1	1	1	1	1	1	1	1	1	1	1	1	1	1	1	1	1	1	1	1	1	1	1	1	1	1	2583106
206	SP Terminal Block, 2 pole, 95 Amp	1	1	1	1																							2574153
	SP Terminal block 3 pole 95 Amp																											2574154
	SP Terminal block 3 pole 310 AMPU																											2574156
207	SP Remote Operation and Fault Indication	1	1	1	1	1	1	1	1	1	1	1	1	1	1	1	1	1	1	1	1	1	1	1	1	1	1	2611955
208	SP Accessory Board	1	1	1	1	1	1	1	1	1	1	1	1	1	1	1	1	1	1	1	1	1	1	1	1	1	1	2589890
209	SP Transformer, 208/24 VAC, 150VA	1																										2574166
	SP Transformer, 240/24 VAC, 150VA		1																									2574167
	SP Transformer, 480/24 VAC, 150VA			1																								2574168
	SP Transformer, 600/24 VAC, 150VA				1																							2574169
210	SP IC2.0 Assembly (+SIM)	1	1	1	1	1	1	1	1	1	1	1	1	1	1	1	1	1	1	1	1	1	1	1	1	1	1	2612588
	SP IC2.0 Assembly	1	1	1	1	1	1	1	1	1	1	1	1	1	1	1	1	1	1	1	1	1	1	1	1	1	1	2612589
	SP IC2.0 Assembly, RS OC (+SIM)	1	1	1	1	1	1	1	1	1	1	1	1	1	1	1	1	1	1	1	1	1	1	1	1	1	1	2612590
	SP IC2.0 Assembly, RS OC	1	1	1	1	1	1	1	1	1	1	1	1	1	1	1	1	1	1	1	1	1	1	1	1	1	1	2612591
211	SP Driver Board	1	1	1	1	1	1	1	1	1	1	1	1	1	1	1	2	2	2	2	2	2	2	2	2	2	2	2579227
	SP Driver Board, RS (OC)	1	1	1	1	1	1	1	1	1	1	1	1	1	1	1	2	2	2	2	2	2	2	2	2	2	2	2603874
212	SP Contactor 30 Amp 1P																											2574148
	SP Contactor 30 Amp 3P																											2574149
	SP Contactor 40 Amp 3P	2	2																									2574150
	SP Contactor 50 Amp 3P																											2574151
213	SP DIN Rail 2 & 3 Pole Terminal																											2584853
	SP DIN Rail 2 Pole Terminal																											2584854
	SP DIN Rail 3 Pole Terminal	4	2	2	2																							2584855
	SP DIN Rail 2 Pole Terminal																											2584856
214	SP DIN Rail End Brackets	1	1	1	1	1	1	1	1	1	1	1	1	1	1	1	2	2	2	2	2	2	2	2	2	2	2	2584852
215	SP PCB Breakout Board	1	1	1	1	1	1	1	1	1	1	1	1	1	1	1	2	2	2	2	2	2	2	2	2	2	2	2584890
216	SP Replacement 50 A SSR	2	2	2	2	2	2	2	2	4	2	2	4	2	2	2	2	4										2584903
	SP Replacement 75 A SSR																											2584904
217	SP Front Door M	1	1	1	1	1	1	1	1	1	1	1	1	1	1	1												2611958
218	SP Front Door L Water Side																											2611959
219	SP Front Door L electronic side																											2611960
220	SP Side Panel Left M/L	1	1	1	1	1	1	1	1	1	1	1	1	1	1	1	1	1	1	1	1	1	1	1	1	1	1	2611964
221	SP Side Panel Right M/L	1	1	1	1	1	1	1	1	1	1	1	1	1	1	1	1	1	1	1	1	1	1	1	1	1	1	2611963
222	SP GFI Board																											2612587
N/S	SP Fuse 1.0 A for PCB (Qty 5)	1	1	1	1	1	1	1	1	1	1	1	1	1	1	1	1	1	1	1	1	1	1	1	1	1	1	2598317
N/S	SP Fuse 4 A 5 X 20 slow blow (Qty 5)- for PCB	1	1	1	1	1	1	1	1	1	1	1	1	1	1	1	1	1	1	1	1	1	1	1	1	1	1	2597441
N/S	SP Parts Bag RS Single Tank	1	1	1	1	1	1	1	1	1	1	1	1	1	1	1												2594680
N/S	SP Parts Bag RS Double Tank																											2594681



Plumbing parts – Condair RS 10-20

Pos Item		Housing Size																					Item No.				
		10							SMALL							20											
		Unit type (lb/hr)							15							20											
Voltage		208V1	220-240V1	440-480V1	550-600V1	208V3	220-240V3	440-480V3	550-600V3	208V1	220-240V1	440-480V1	550-600V1	208V3	220-240V3	440-480V3	550-600V3	208V1	220-240V1	440-480V1	550-600V1	208V3	220-240V3	440-480V3	550-600V3		
301	SP Hose Spring Clamp Kit	1	1	1	1	1	1	1	1	1	1	1	1	1	1	1	1	1	1	1	1	1	1	1	1	2584876	
302	SP Fill Cup Kit	1	1	1	1	1	1	1	1	1	1	1	1	1	1	1	1	1	1	1	1	1	1	1	1	2584889	
303	SP Triple Valve 10-20 lb/hr, 2 x 0.8 & 14 L	1	1	1	1	1	1	1	1	1	1	1	1	1	1	1	1	1	1	1	1	1	1	1	1	2584833	
324	SP Double Fill Valve 0.8 L	1	1	1	1	1	1	1	1	1	1	1	1	1	1	1	1	1	1	1	1	1	1	1	1	2601393	
305	SP Drain cup	1	1	1	1	1	1	1	1	1	1	1	1	1	1	1	1	1	1	1	1	1	1	1	1	2584836	
306	SP Process Level Sensing Chamber (precision only)	1	1	1	1	1	1	1	1	1	1	1	1	1	1	1	1	1	1	1	1	1	1	1	1	2584840	
307	SP Gasket Level Sensing Chamber	1	1	1	1	1	1	1	1	1	1	1	1	1	1	1	1	1	1	1	1	1	1	1	1	2584846	
308	SP Outside Level Sensor PCB	1	1	1	1	1	1	1	1	1	1	1	1	1	1	1	1	1	1	1	1	1	1	1	1	2584841	
309	SP Process Level Sensor PCB (precision only)	1	1	1	1	1	1	1	1	1	1	1	1	1	1	1	1	1	1	1	1	1	1	1	1	2584842	
310	SP Level Sensing Cable, P Double Short	1	1	1	1	1	1	1	1	1	1	1	1	1	1	1	1	1	1	1	1	1	1	1	1	2590092	
311	SP Drain Pump + mounts	1	1	1	1	1	1	1	1	1	1	1	1	1	1	1	1	1	1	1	1	1	1	1	1	2584887	
312	SP Level Control Hose Kit 10-20 lb/hr	1	1	1	1	1	1	1	1	1	1	1	1	1	1	1	1	1	1	1	1	1	1	1	1	2584877	
313	SP Triple Valve Hoses 10-20 lb/hr	1	1	1	1	1	1	1	1	1	1	1	1	1	1	1	1	1	1	1	1	1	1	1	1	2584896	
315	SP Drain Cooling Hose 10-20 lb/hr	1	1	1	1	1	1	1	1	1	1	1	1	1	1	1	1	1	1	1	1	1	1	1	1	2584892	
316	SP Fill Cup:Drain Cup Hose 10-20 lb/hr	1	1	1	1	1	1	1	1	1	1	1	1	1	1	1	1	1	1	1	1	1	1	1	1	2584900	
317	SP Pump Hose Kit 10-20 lb/hr	1	1	1	1	1	1	1	1	1	1	1	1	1	1	1	1	1	1	1	1	1	1	1	1	2584895	
318	SP Water Inlet Adapter 30-180 lb/hr	1	1	1	1	1	1	1	1	1	1	1	1	1	1	1	1	1	1	1	1	1	1	1	1	2584891	
319	SP Preformed Drain Hose	1	1	1	1	1	1	1	1	1	1	1	1	1	1	1	1	1	1	1	1	1	1	1	1	2588484	
322	SP Drain water cooling valve - (RO option only)	1	1	1	1	1	1	1	1	1	1	1	1	1	1	1	1	1	1	1	1	1	1	1	1	2600342	
323	SP Manual Drain hose with end cap	1	1	1	1	1	1	1	1	1	1	1	1	1	1	1	1	1	1	1	1	1	1	1	1	2598461	
N/S	SP TX for BPP Option (listed below)																										
	SP Trans. 208-416 V/120 V, 150VA, 50/60_CE	1			1				1			1				1			1							2597312	
	SP Trans. 220-240 V/120 V, 150 VA, 50/60_CE EL	1			1				1			1				1			1							2598823	
	SP Trans. 480-600 V/120 V, 150 VA, 50/60_CE EL		1	1			1	1			1	1			1	1			1	1			1	1		2598826	
	SP Fuse Block, EL RS OC	1	1	1	1	1	1	1	1	1	1	1	1	1	1	1	1	1	1	1	1	1	1	1	1	2585114	
	SP Fuse, 1 Amp 600 V Slow Blow, BP	2	2	2	2	2	2	2	2	2	2	2	2	2	2	2	2	2	2	2	2	2	2	2	2	2	2584386

Warranty

Condair Inc. or Condair Ltd. (depending on the entity that supplied the product, and hereinafter collectively referred to as CONDAIR) warrant for a period of two years after installation or 30 months from the manufacturer's ship date, whichever date is earlier, that CONDAIR's manufactured and assembled products, not otherwise expressly warranted, are free from defects in materials and workmanship. Notwithstanding the foregoing, the products listed below have an alternate warranty period:

- GS/GSTC Series heat exchanger(s) are warranted to be free from defects in materials and workmanship for a period of 3 years from installation or 40 months from the manufacturer's ship date, whichever is earlier.
- SAM-e Short Absorption Manifolds, except for the coupling seals, are warranted to be free from defects in materials and workmanship for a total period of 10 years from the manufacturer's ship date.
- Condair RH Connect and Condair RH Classic humidifiers are warranted to be free from defects in materials and workmanship for a period of 5 years from the manufacturer's ship date.
- Spare Parts used for repairs are warranted for the balance of the term of the warranty on the original humidifier or 90 days, whichever is longer.
- No warranty is made against corrosion, deterioration, or suitability of substituted materials used as a result of compliance with government regulations.

CONDAIR's obligations and liabilities under this warranty are limited to furnishing replacement parts to the customer, F.O.B. CONDAIR's factory. The replacement parts are warranted for the balance of the term of the warranty on the original humidifier or 90 days, whichever is longer. Procedure:

1. Customer Requests Warranty as per instructions on the CONDAIR Warranty Form.
2. CONDAIR reviews the warranty claim and will respond in one of two ways:
 - a. Warranty Accepted – Replacement Part or credit granted.
 - b. Warranty Declined – Response with justification will be provided to the customer.
3. In some cases, CONDAIR may request the part to be returned, freight prepaid by the customer, as part of the warranty acceptance or warranty determination process. Some reasons include:
 - a. Part must be analyzed to determine the root cause of failure.
 - b. Part must be returned to the supplier for claim/investigation.

When parts are requested to be returned, replacement parts will be sent by CONDAIR to the customer against an invoice from CONDAIR paid by the customer. The cost of the replacement parts will be reimbursed to the customer with a credit note after the parts are received and analyzed by CONDAIR, if the warranty is accepted.

The warranties set forth herein are in lieu of all other warranties expressed or implied by law. No liability whatsoever shall be attached to CONDAIR until said products have been paid for in full and then said liability shall be limited to the original purchase price for the product. Any further warranty, with the exception of a purchased extended warranty described below, must be in writing, and signed by an officer of CONDAIR.

CONDAIR makes no warranty and assumes no liability unless the equipment is installed in strict accordance with the installation manual in effect at the date of purchase, and by properly qualified and licensed professionals capable of installing such equipment.

CONDAIR makes no warranty and assumes no liability whatsoever for consequential damage or damage resulting directly from misapplication, incorrect sizing, or lack of proper maintenance of the equipment.

CONDAIR makes no warranty and assumes no liability whatsoever for damage to the products, humidifier, supply lines, drain lines, steam distribution systems, or the building as a whole caused by freezing.

CONDAIR reserves the right to change the design, specifications, and performance criteria of its products without notice or obligation.

Extended Warranty

Extended warranties are available to purchase under the conditions listed above. Extended warranties must be purchased at the time of the original equipment order.



www.condairparts.com

Buy authentic Condair parts factory direct.



Would you recommend Condair?
Take our two question survey.



U.S.A.
1021 6th Street
Racine, WI 53403

CANADA
2740 Fenton Road
Ottawa, Ontario K1T 3T7

TEL: 1.866.667.8321
EMAIL: na.info@condair.com
WEBSITE: www.condair.com

