

## Quick Start Guide

Condair HumiLife – The economic solution for forced air heating

Condair RE

# Thank you for choosing Condaire.

## Cautions and Warnings



### CAUTION: Servicing

- Disconnect power before any servicing.
- Electrical compartment contains high voltage components.
- Condaire does not accept any liability for installations of humidity equipment installed by unqualified personnel, or the use of parts, components, or equipment that are not authorized or approved by Condaire.



### CAUTION: Electrical

- All electrical work should be done according to all applicable local and national codes.



### CAUTION: Plumbing

- (Recommended) Plumbing to be performed by a licensed plumber.
- All plumbing work should be done according to local plumbing code.



### CAUTION: Installation

- Do NOT mount in area where freezing can occur.
- Do NOT mount on vibrating surface.
- Do NOT mount on the floor.
- (Recommended) Install an air proving switch.

## Download Condaire HumiLife

Use your phone's camera or QR scanner to go to Google Play (Android) or the App Store (iOS).

Google Play (Android)



App Store (iOS)



## What's in the box?

- Condaire HumiLife RE Humidifier
- 24 VDC power supply
- Mounting template
- Saddle valve
- Inlet hose
- Drain hose
- Clip for drain hose
- Quick connector
- Self-tapping screws

## What you'll need

- Condaire HumiLife app. Find the app in the App Store® (iPhone) or Google Play Store (Android). (required to finalize the installation).
- Humidity sensor or humidistat controller (ex. Condaire Humilife RH Duct Sensor).
- Flexible or rigid bypass duct section.

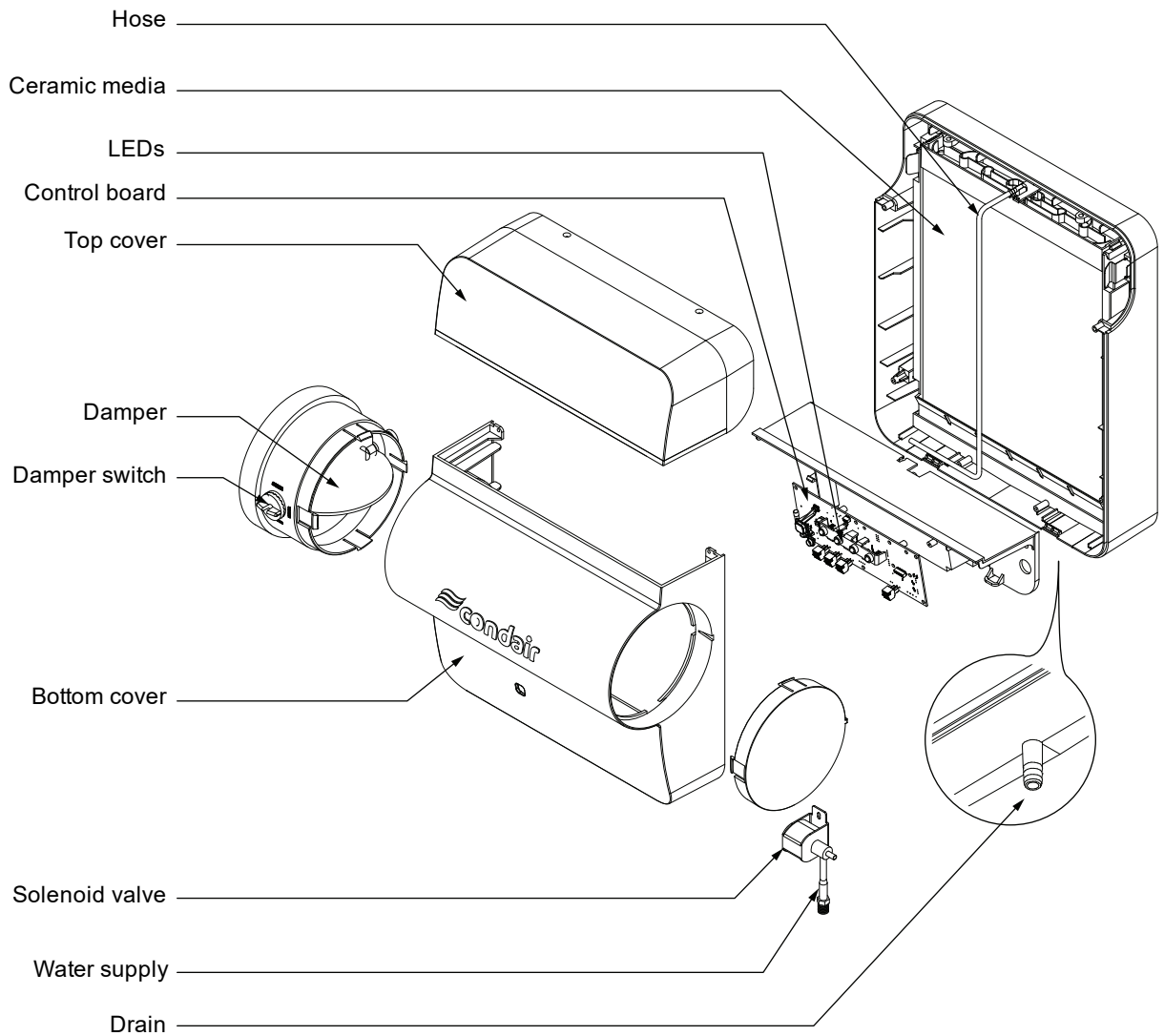
Access to:

- Drain
- Water supply
- Forced air ventilation system
- Electrical outlet

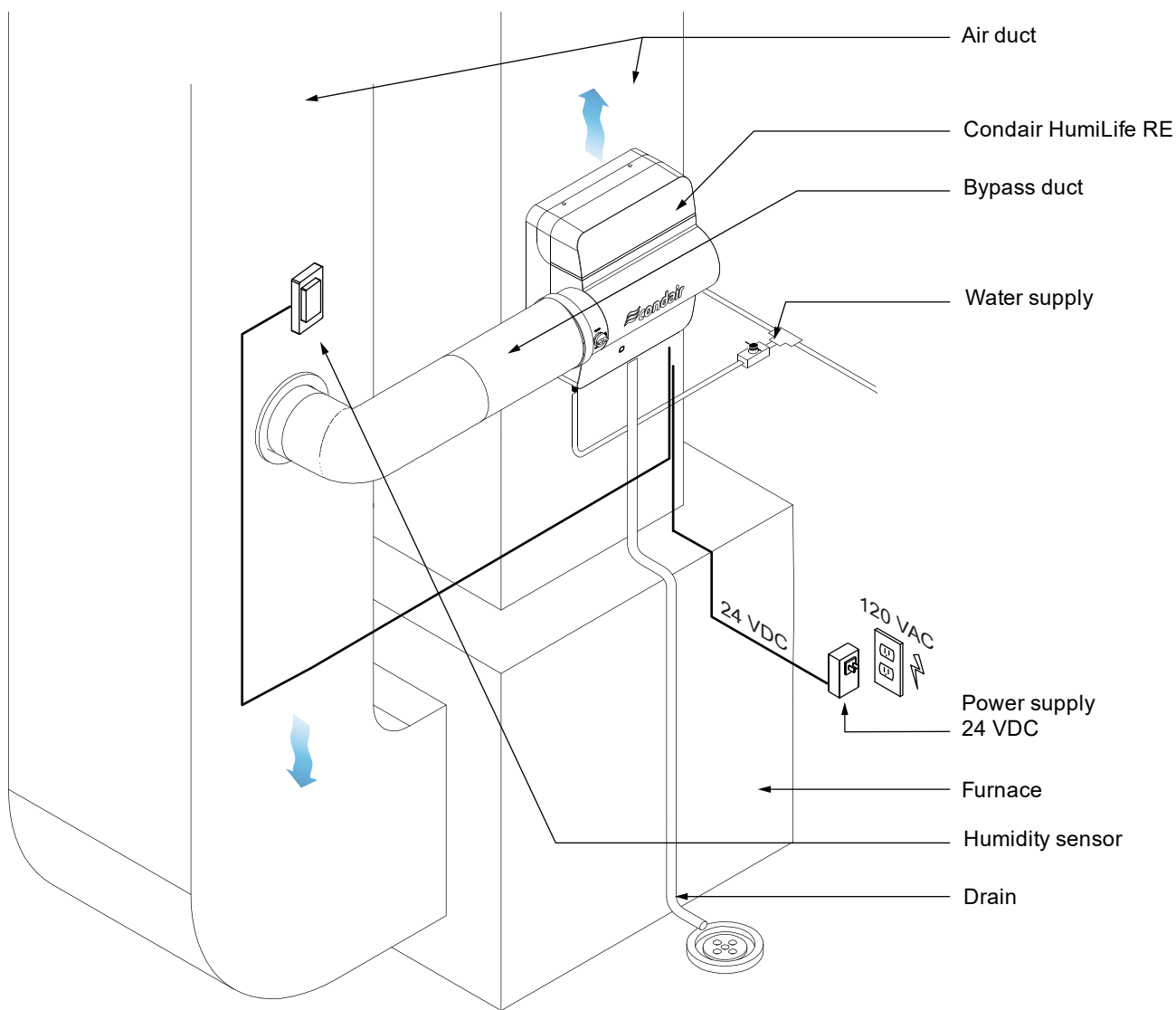
Tools (suggested):

- Protective eye-wear
- Work gloves
- Electric drills and drill bits
- Screw drivers
- Wrench (adjustable or fixed)
- Wire cutter and wire stripper
- Measuring tape or ruler
- Pliers
- Flashlight
- Foil (sheet metal) tape

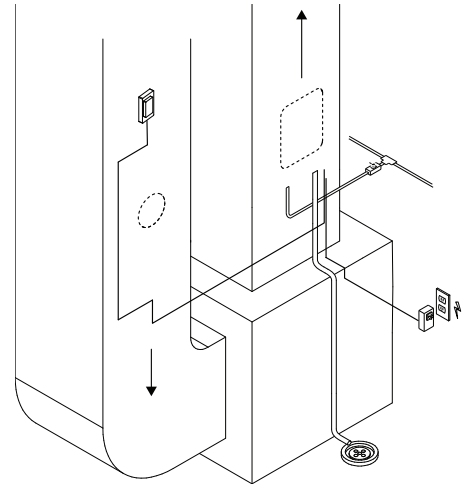
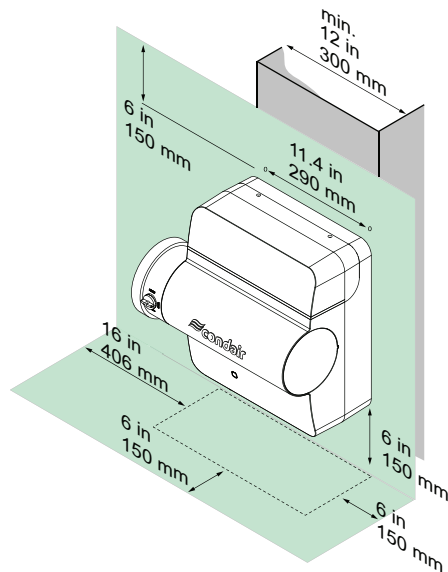
# Product Overview



# Installation Overview

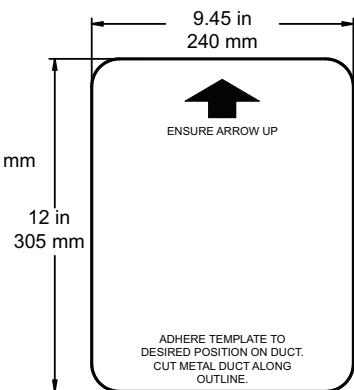
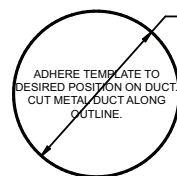


## Clearances & Mounting Location

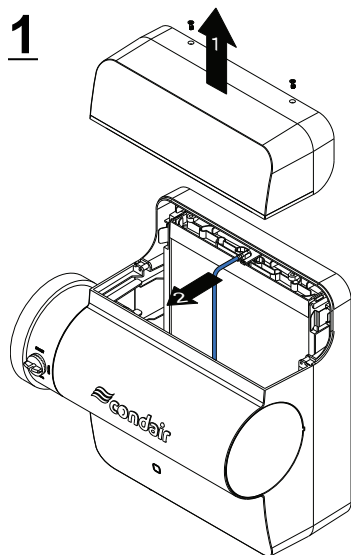


### Mounting Considerations

- The unit may be installed on the return or the supply duct.
- Mounting holes are 11.4 in (290 mm) apart. Place on a duct of width 12 in (300 mm) or greater.
- Avoid cutting and mounting too close to the air conditioning coil in the duct. The best location to mount is 24 in (610 mm) downstream of the AC coil.

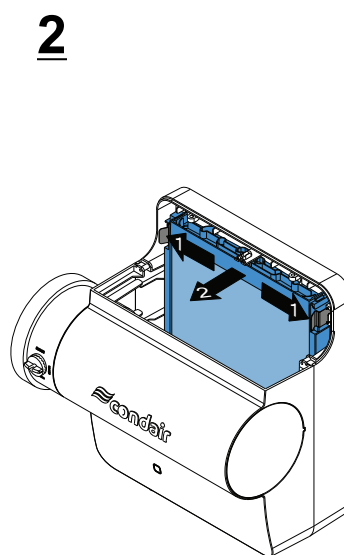


## Removing the Ceramic Media

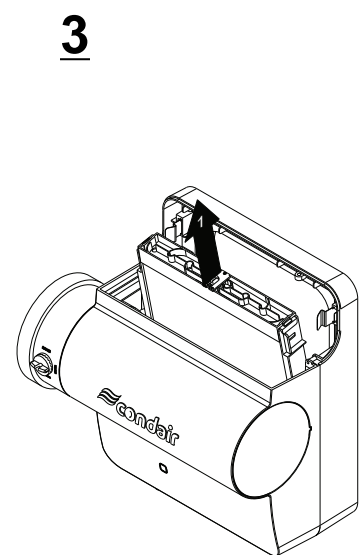


Remove the top cover of the humidifier. You should see a nozzle and hose for the water inside.

Disconnect the hose.



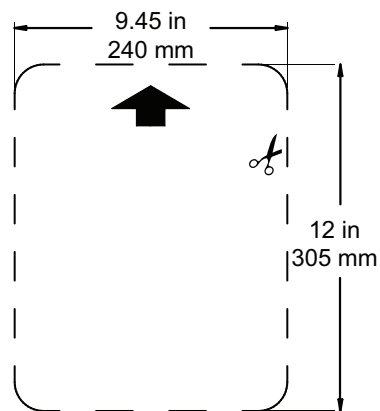
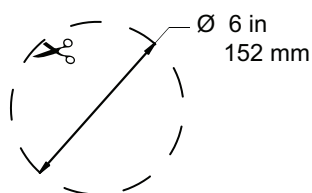
Pull apart the two tabs securing the ceramic media and tilt the ceramic media out.



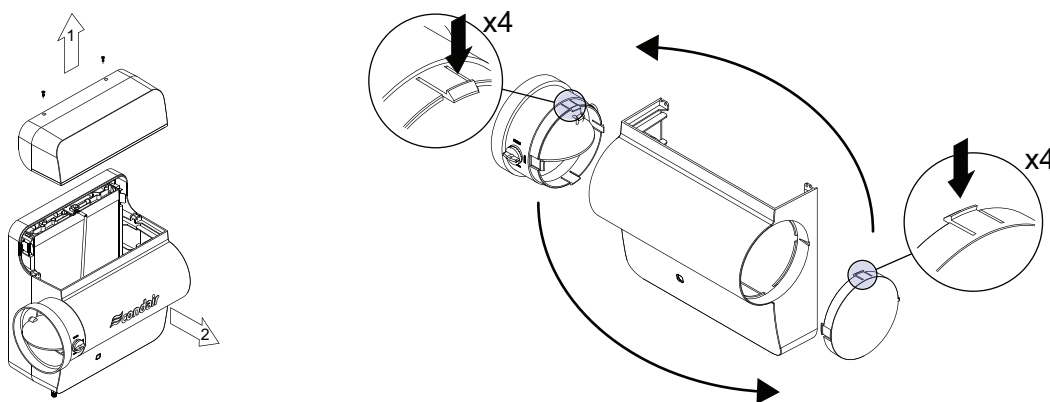
Remove the ceramic media.

# Mounting Your Humidifier

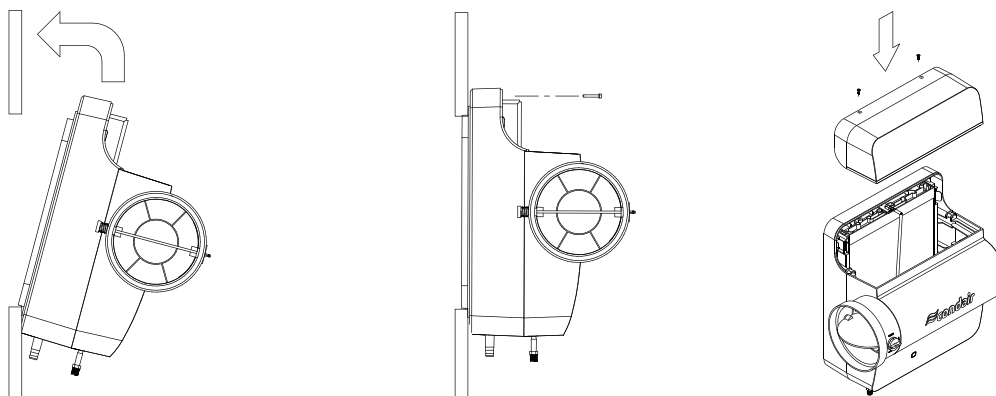
**1**



**2\***



**3**

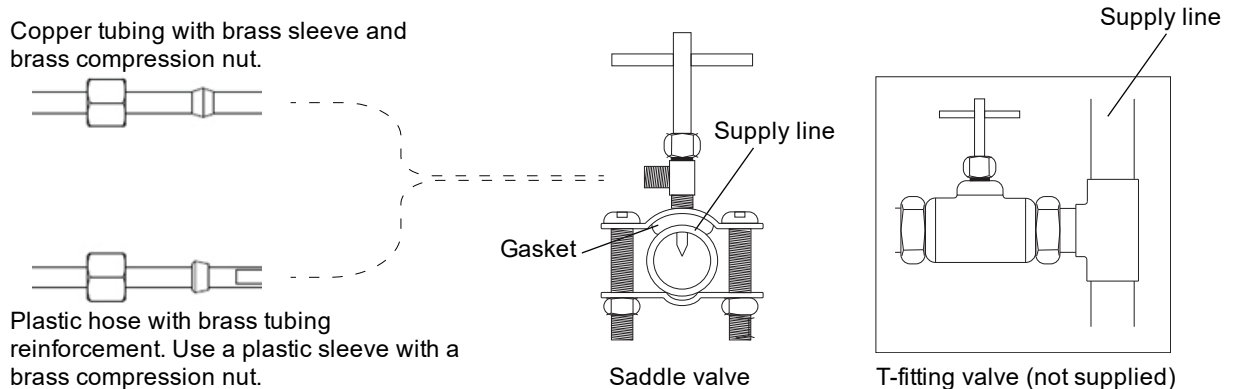


1. Use the templates (supplied) to cut holes in the ducts. Refer to the installation manual for more information.
  - a. Cut a rectangle into the air duct (return or supply). This hole will be for the humidifier body.
  - b. Cut a round hole into the other duct. This hole will be for the bypass duct.
2. (\* If required) Change the orientation of the bypass opening.
  - a. Remove the top cover, then the bottom cover of the humidifier.
  - b. Push in the tabs and push out the end cap and bypass opening. Switch their positions.
  - c. Reinstall the bypass opening/damper and end cap, then reinstall the bottom cover.
3. Mount the humidifier.
  - a. Secure the support hooks on the humidifier to the bottom lip of the rectangular hole.
  - b. Push the top of the humidifier back against the duct and fasten the humidifier to the duct by using two self-drilling sheet metal screws (provided).
  - c. Reinstall the top cover at the end of the installation.

## Tapping into an Existing Water Line

You may need to tap into your existing water line to supply water to your humidifier. A saddle valve is supplied with the unit and will allow you to do this easily. Some installations may require alternative means to divert your water supply (ex. T-fitting and shutoff valve) and are not supplied with the humidifier. You may require installation by a licensed plumber. **Adhere to all local or regional plumbing codes.**

For more information, refer to the Installation Manual.



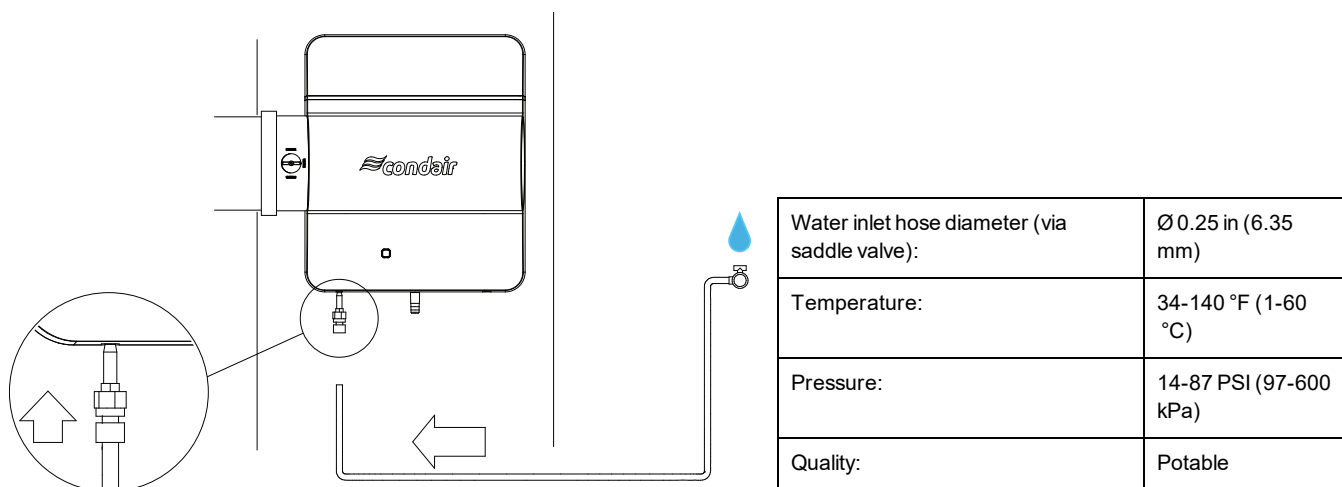
**IMPORTANT!** Do not use the saddle valve to pierce plastic supply water pipes. Only rigid (copper or steel) water lines can be used with the saddle valve. A T-fitting and shut-off valve must be used with a plastic (or PEX) water supply line.

**IMPORTANT!** Ensure pin is completely backed up into the valve body by turning the handle counter-clockwise.

**IMPORTANT!** Adhere to all local/national plumbing codes.

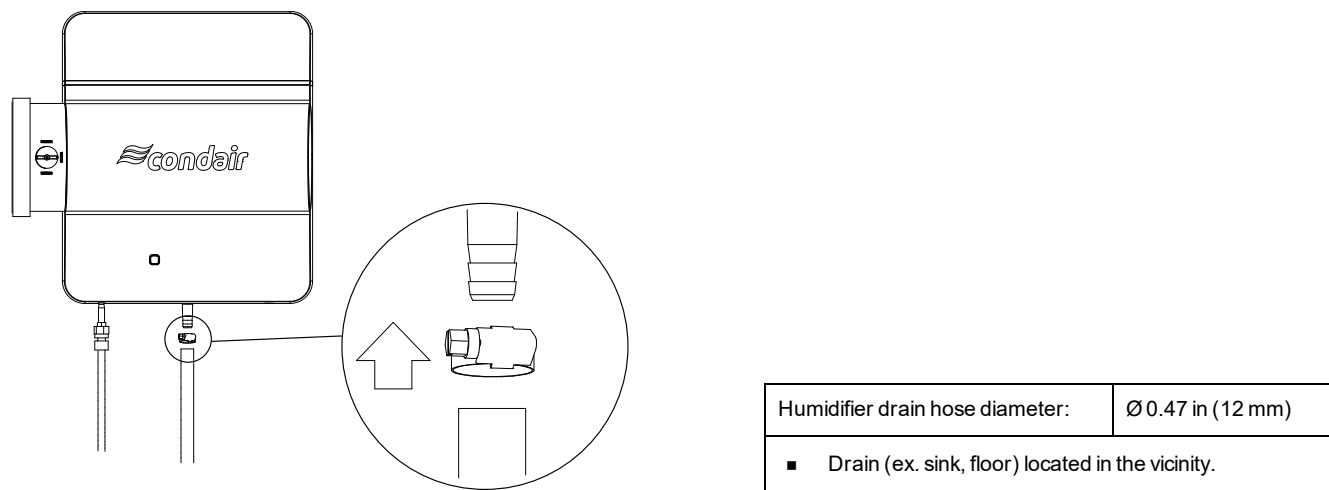
1. Loosely assemble one side of the top clamp to bottom clamp with one screw and nut. For best results, mount the saddle valve on the top or side of the water supply line.
2. Place gasket over the piercing pin of the top clamp, then place over the water supply line.
3. Assemble the other side of the top and bottom clamps. The water supply line should be between the gasket and bottom clamp.
4. Tighten the connection between the top and bottom clamps.
5. Connect the water line between the humidifier and saddle valve. Ensure the fittings are installed.
  - For the plastic water line (supplied), from the saddle valve to the humidifier:
    - a. Place the brass compression nut over one end of the plastic water line. Ensure the wider opening of the nut faces the saddle valve outlet.
    - b. Place the plastic sleeve over one end of the plastic water line.
    - c. Place the brass tubing reinforcement into the plastic water line.
    - d. Insert the water line into the saddle valve outlet. Push the brass compression nut to the saddle valve, over the plastic sleeve, and over the brass tubing reinforcement. The fittings should be nested in the nut.
    - e. Secure the nut to the saddle valve.
    - f. Connect the other end of the plastic water line to the humidifier, at the inlet valve (or quick connect, if installed)
6. Twist the handle on the saddle valve clockwise to pierce the water supply line. Twist counter-clockwise to allow water through the saddle valve.

## Connecting the Water Supply



1. Remove the protective sleeve on the inlet valve and install the white quick connector over the inlet valve.
2. Measure and cut the water supply hose that will reach the humidifier from the water supply valve.
3. Insert the water supply hose into the quick connect fitting and ensure a tight fit.
4. Connect and tighten the water supply hose to the supply valve.
5. Turn the saddle valve to allow water to enter the new line.

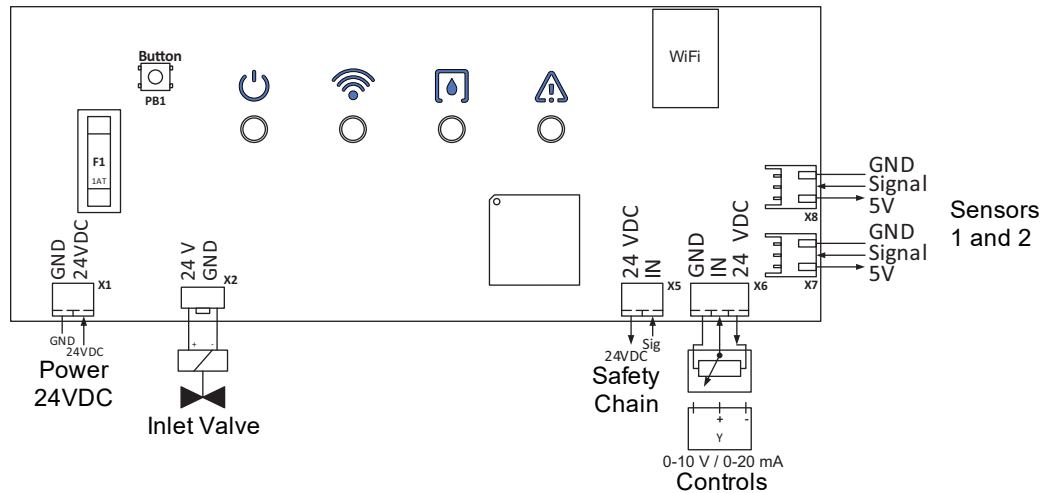
## Connecting the Drain Line



1. Connect the drain line to the spout on the humidifier and secure the hose with hose clamps.
2. Route the drain hose to a suitable drain. The hose must have a continuous downward slope (to prevent standing water) and have no kinks. Suitable drains include:
  - Floor drain
  - Sink
  - Sewer
3. Secure the hose along its length to prevent sagging.



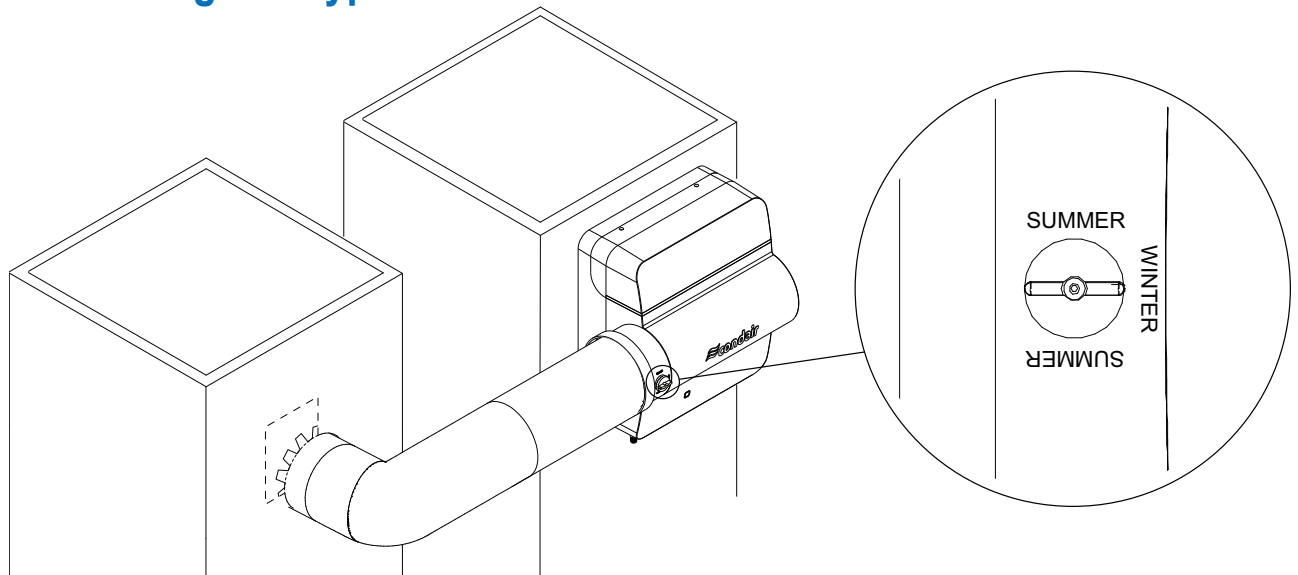
## Installing the Power Connection and Controls



**IMPORTANT! Unit accepts 24 VDC only.** Adhere to all local and regional electrical codes.

1. Ensure external devices and power cord are not plugged in, and open the top and front cover of the humidifier.
2. Route the cables into the unit from the bottom of the humidifier. Refer to the diagram above, or the installation manual and manual provided with your control device.
  - **24 VDC Power: Do NOT reverse positions.** Ensure black (GND) - left; red (24 VDC) - right.
  - **Controls:** Dependent on your control device. **Humidity sensor or controller required to operate the unit.** Unit will accept on/off, 0-10V, and 0-20mA signals.
3. After connecting sensors and power wires, close the humidifier and plug in the 24 VDC power supply.

## Installing the Bypass Duct



1. Adjust the bypass duct and fix it to the circular hole of the air duct.
2. Extend the free end of the bypass duct to the humidifier and secure with sheet metal tape.
3. Depending on the season, switch the damper pad on the humidifier.
  - **SUMMER** - damper closes and air does not pass through the humidifier.
  - **WINTER** - damper opens and air passes through the humidifier.

## Download the Condair HumiLife App

Use your phone's camera or QR scanner to go to Google Play (Android) or the App Store (iOS).

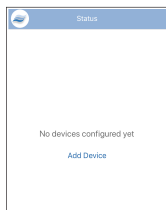
Google Play (Android)



App Store (iOS)

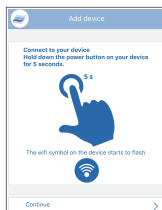


## Connecting to the Condair HumiLife App



Download the Condair HumiLife app from the App Store (iOS) or Google Play Store (Android).

Open the app and allow it to load. Press **Add Device**. Follow on-screen instructions.



Press and hold the power button on the humidifier for 5 seconds (the WiFi LED will start flashing). Once the connection is established, follow the on-screen instructions to configure your humidifier.

# Disclaimer

This Quick Start Guide (the “QSG”) provides basic product and installation overview of the Condair Humilife Humidifier (the “Humilife Humidifier”) and is for general information purposes only. The general installation guidelines contained herein do not purport to cover all details of the Humilife Humidifier nor do they provide for every contingency met in connection with installation. Please consult the complete Installation Manual and Operation Manual for a more comprehensive installation guide and for general operation, maintenance, and troubleshooting information, including Condair’s suggested storage, packaging, and transportation guidelines. The Installation Manual and Operation Manual contain specific system, accessories, and components. Copies of the complete Installation Manual and Operation Manual can be found at: [www.condairhumilife.com](http://www.condairhumilife.com). Please read all Cautions and Warnings before installing and using the Humilife Humidifier.

All electrical connections must be installed in accordance with local and national electrical code requirements by a licensed electrician.

All water supply and drain line connections must be installed in accordance with local plumbing codes by a licensed plumber.

Condair does not accept any liability for installations of humidity equipment installed by unqualified personnel or the use of parts/components/equipment that are not authorized or approved by Condair.

# Compliance

This equipment has been tested and found to comply with the limits for a Class B digital device, pursuant to part 15 of the FCC Rules. These limits are designed to provide reasonable protection against harmful interference in a residential installation. This equipment generates, uses and can radiate radio frequency energy and, if not installed and used in accordance with the instructions, may cause harmful interference to radio communications. However, there is no guarantee that interference will not occur in a particular installation.

If this equipment does cause harmful interference to radio or television reception, which can be determined by turning the equipment off and on, the user is encouraged to try to correct the interference by one or more of the following measures:

- Reorient or relocate the receiving antenna.
- Increase the separation between the equipment and receiver.
- Connect the equipment into an outlet on a circuit different from that to which the receiver is connected.
- Consult the dealer or an experienced radio/TV technician for help.

# Warranty

Condair Inc. and/or Condair Ltd. (hereinafter collectively referred to as THE COMPANY), warrant for a period of five years from the date of purchase by the customer, that THE COMPANY's manufactured and assembled products, not otherwise expressly warranted, are free from defects in material and workmanship. No warranty is made against corrosion, deterioration, or suitability of substituted materials used as a result of compliance with government regulations.

THE COMPANY's obligations and liabilities under this warranty are limited to furnishing replacement parts to the customer, F.O.B. THE COMPANY's factory, providing the defective part(s) is returned freight prepaid by the customer. Parts used for repairs are warranted for the balance of the term of the warranty on the original humidifier or 90 days, whichever is longer.

The warranties set forth herein are in lieu of all other warranties expressed or implied by law. No liability whatsoever shall be attached to THE COMPANY until said products have been paid for in full and then said liability shall be limited to the original purchase price for the product. Any further warranty must be in writing, signed by an officer of THE COMPANY.

THE COMPANY's parts or materials that are considered consumables, including but not limited to: cylinders, filters, nozzles, membranes, media, gaskets, O-rings, etc. are NOT covered by the warranty.

THE COMPANY makes no warranty and assumes no liability unless the equipment is installed in strict accordance with a copy of the catalog and installation manual in effect at the date of purchase and by a contractor approved by THE COMPANY to install such equipment.

THE COMPANY makes no warranty and assumes no liability whatsoever for consequential damage or damage resulting directly from misapplication, incorrect sizing or lack of proper maintenance of the equipment.

THE COMPANY makes no warranty and assumes no liability whatsoever for damage resulting from freezing of the humidifier, supply lines, drain lines, or quality of the water used.

THE COMPANY retains the right to change the design, specification and performance criteria of its products without notice or obligation.

THE COMPANY's limited warranty on accessories, not of the companies manufacture, such as controls, humidistats, pumps, etc. is limited to the warranty of the original equipment manufacturer from date of original shipment of humidifier.

Tel: 1.866.667.8321, Fax: 613.822.7964  
Email: [na.humilife@condair.com](mailto:na.humilife@condair.com)  
Website: [www.condairhumilife.com](http://www.condairhumilife.com)

