

ML RO 3000

TECHNICAL DATA

Reverse osmosis system for elimination (> 95 %) of salts and minerals from main water with a capacity of 19020 GPD.

The system is developed by Condair Systems with focus on reliability and hygienic solutions. The system applies a membrane separation process whereby water molecules may pass through the membrane, while the majority of salts and minerals are retained.

The system is fitted on a frame with a separate reservoir tank and all components are assembled, tested, and ready to use.



Fig. 1 – ML RO 3000

ML RO 3000 is equipped with the following components:

Standard:

- PLC control
- Separate pump provides 58 psi output pressure
- Reservoir tank closed with 0.2 µm breathing filter
- Overflow protection
- Type approved water meter for produced permeate
- 5 µm filtration of the tap water
- Pressure switch for protection of pump
- Operational hour meter
- Stopcock for RO water
- Uses 3x40" Ø8" NSR 98.5% RO membrane

Options & Add-Ons:

- Water softener
- Active carbon filter (dechlorinator)
- UV system for sterilization of water
- Conductivity meter/alarm
- Dosage unit for regulating conductivity, hardness, clean in place, etc.

Benefits:

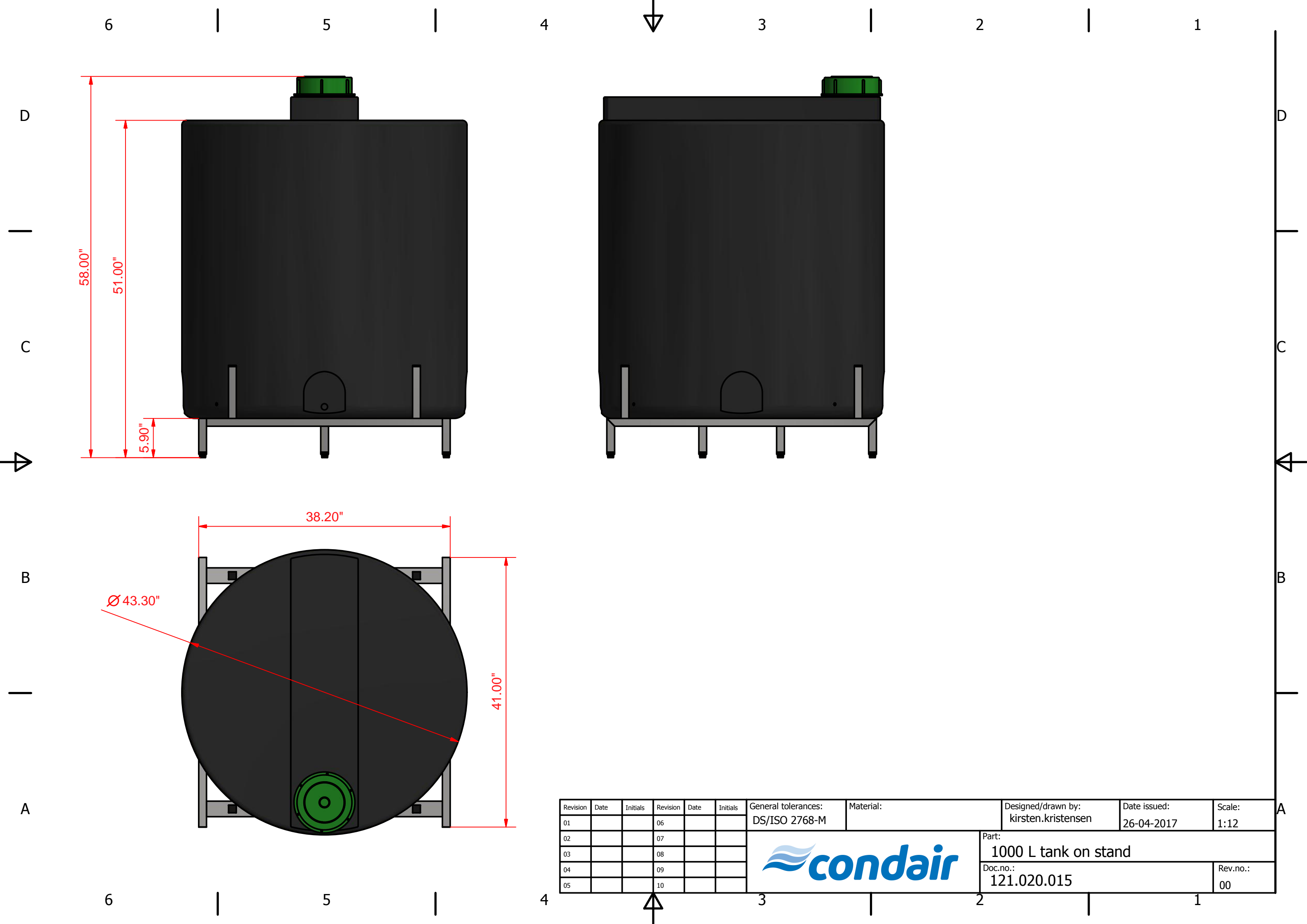
- Delivered on coated steel frame and with separate reservoir tank
- Fully assembled and tested
- All components exposed to water are made of corrosion resistant material
- The hoses are stainless steel braided

ML RO 3000

TECHNICAL DATA

Specifications:	
Capacity*:	1030 gph (3900 l/h) at 59°F / 793 gph (3000 l/h) @ 41°F
Permeate quality:	5 < EC < 30 µS/cm
Permeate/Concentrate ratio:	approx. 75 / 25 %
Reservoir tank:	264 gallons (1000 L)
Size, frame: (L x W x H)	55 x 28 x 63 inches
Size, reservoir tank: (Ø x H)	Ø43.3" x 58 inches
Weight:	Pump: 882 lb. (400 kg) / Tank (full): 2425 lb. (1100 kg)
Sound pressure level:	< 75 dB
Supply voltage:	3*400 VAC+GN+N, 50Hz, 6.5 kW, Pre-fuse 32A
	3*480 VAC+GN+N, 60Hz, 8 kW, Pre-fuse 32A
Dissolved salt removal:	> 95 %
Water connection, tap water:	1" RG
Water connection, RO-water:	1" RG
Water connection, drainage:	1" RG
Outgoing pressure, RO-water:	43 – 60 psi (3.0 - 4.2 bar)
* Capacity may vary depending on the quality of the tap water and decreases by approximately 3 % per decrease in °F of the temperature of the water.	

Pre-Conditions:	
Water supply:	Drinking Water Quality 36 - 101 psi (2.5 - 7 bar) at @ 5000 l/h / 1320 gal/h
Hardness:	Max. 15.64 gr/gal
Conductivity:	150-750 µS/cm
Free chlorine:	Max. 0.05 mg/l
TDS:	Max. 625 mg/l
Silt index:	Max. 3
KMnO4:	Max. 10 mg/l
Fe:	Max. 0.2 mg/l
Mn:	Max. 0.05 mg/l
NTU:	Max. 1.0
Temperature:	Max. 59 °F
pH:	6.5 – 8.5



Revision	Date	Initials	Revision	Date	Initials	General tolerances:	Material:	Designed/drawn by:	Date issued:	Scale:
01			06			DS/ISO 2768-M		kirsten.kristensen	26-04-2017	1:12
02			07					Part: 1000 L tank on stand		
03			08					Doc.no.: 121.020.015		
04			09					Rev.no.: 00		
05			10							