



Important:

- The instructions in both this manual and the Condair SE Series Installation manual must be followed for installation and operation of the Condair SE Outdoor Humidifier.
- Read and save these instructions. This guide to be left with equipment.



Condair **SETC** **Outdoor**

Supplemental Installation and Spare Parts Manual

Includes additional installation information, wiring diagram, and spare parts lists for your outdoor SETC B+ steam exchange humidifier.



Thank you for choosing Condair.

INSTALLATION DATE (MM/DD/YYYY)

MODEL #

SERIAL #

Proprietary Notice

This document and the information disclosed herein are proprietary data of Condair LTD. Neither this document nor the information contained herein shall be reproduced used, or disclosed to others without the written authorization of Condair LTD., except to the extent required for installation or maintenance of recipient's equipment. All references to the Condair name should be taken as referring to Condair LTD.

Liability Notice

Condair does not accept any liability for installations of humidity equipment installed by unqualified personnel or the use of parts/components/equipment that are not authorized or approved by Condair.

Copyright Notice

Copyright 2019, Condair LTD. All rights reserved.

Contents

Note:

This manual is a supplement to the Condair SE Series Installation and Operation Manual. It contains only additional information required to install the Condair SETC Outdoor.

For information on Start Up, Operation, Maintenance and Servicing refer to the Condair SE Series Installation and Operation Manual

1 Introduction

- 2 Receiving and Unpacking
- 3 Condair SETC Outdoor
Specific Components
- 5 Condair SETC Outdoor Models
- 6 Options and Accessories

7 Installation

- 8 Typical Condair SETC Outdoor Installation
- 9 Location
- 10 Condair SETC Outdoor Curb
- 11 Installing on the Curb
- 12 Plumbing
- 13 Freeze Protecting Water Supply
- 14 Boiler Steam and Boiler
Condensate Return
- 15 Steam Lines and Condensate
Returns

19 Troubleshooting

- 20 Condair SETC Outdoor Wiring Diagram

21 Spare Parts

28 Warranty

Introduction



CAUTION: Servicing

- Disconnect main power before any servicing.
- Shut off pressurized steam supply and ensure steam pressure is safely relieved before any servicing of pressurized steam components.
- The electrical compartment contains high voltage components and wiring. Access should be limited to authorized personnel only.
- During and following operation of the humidifier, the steam and components in contact with the steam such as the tank, blower pack, steam lines, steam distributors, and condensate lines can become hot and can burn if touched.
- Condair does not accept any liability for installations of humidity equipment installed by unqualified personnel or the use of parts/components/equipment that are not authorized or approved by Condair.



CAUTION: Electrical

- All electrical work should be done according to local electrical code.
- Electrical connection to be performed by a licensed electrician.



CAUTION: Plumbing / Steam Lines

- Plumbing to be performed by a licensed plumber.
- Pressurized steam line installation to be performed by a qualified installer.
- Drain water from humidifier can be very hot. Do not drain to public sink.
- All plumbing and pressurized steam supply line work should be done according to local plumbing code.



CAUTION: Installation

- **Internal heaters will not keep the Condair SETC from freezing in cold climates. They are intended to maintain electronics at a minimum operating temperature for cold weather startup.**
- **Keep warm and freeze protection must be installed and configured for climates where there is any risk of temperature falling below 32°F (0°C).**
- The Condair SETC/P produces steam at atmospheric pressure no devices which could block steam output should be connected to the steam outlet.
- Steam output lines must be installed so that no restriction can produce backpressure in the humidifier.
- Regardless of selecting On/Off or modulating control method, Condair humidifiers must have a closed circuit across its On/Off security loop control terminal to operate. Condair highly recommends the use of a high limit humidistat and an air proving switch in series for this function.
- Unit damage caused by water quality outside of the specified ranges is not covered under warranty.

Receiving and Unpacking

- 1 Check packing slip to ensure ALL material has been delivered.
- 2 All material shortages are to be reported to Condair within 48 hours from receipt of goods. Condair assumes no responsibility for any material shortages beyond this period.



Note: A steam valve, actuator, and wye strainer are shipped along with the SETC/P humidifier but in separate small boxes.

- 3 Inspect shipment for damage and note damages on shipping waybill accordingly.
- 4 After unpacking, inspect equipment for damage and if damage is found, notify the shipper promptly.
- 5 All Condair products are shipped on an FOB factory basis. Any and all damage, breakage or loss claims are to be made directly to the shipping company.

Before Installation

- 1 Ensure that available voltage and phase corresponds with humidifier voltage and phase as indicated on humidifier's specification label.
- 2 If steam supply is from a Medium or High Pressure boiler ensure supply steam line includes a relief valve to prevent supply pressure from exceeding 15 psig.
- 3 Ensure means for returning boiler steam condensate to boiler at atmospheric pressure are available.
- 4 Ensure sufficient clearances will be available as described in Location 9.
- 5 Ensure steam lines can be routed to distributor, Condair SAM-e manifold, or blower pack as described in Steam Lines and Condensate Returns on page 15.
- 6 Report any discrepancy immediately to the site engineer.

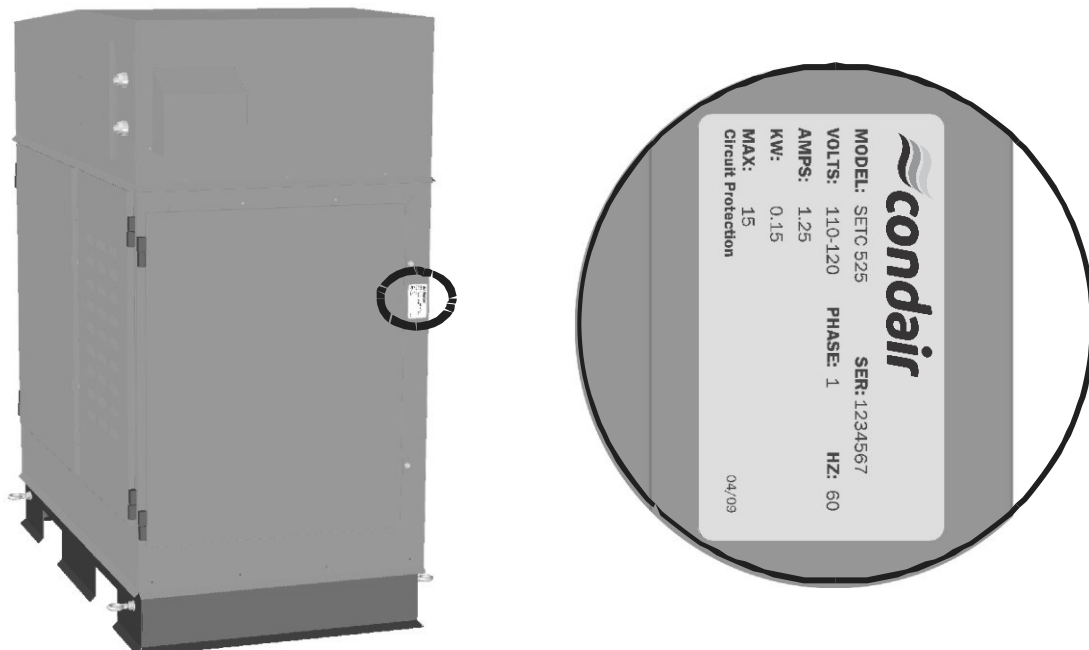


Figure 1: Condair SETC Outdoor Specification Label Location

Condair SETC Outdoor Specific Components

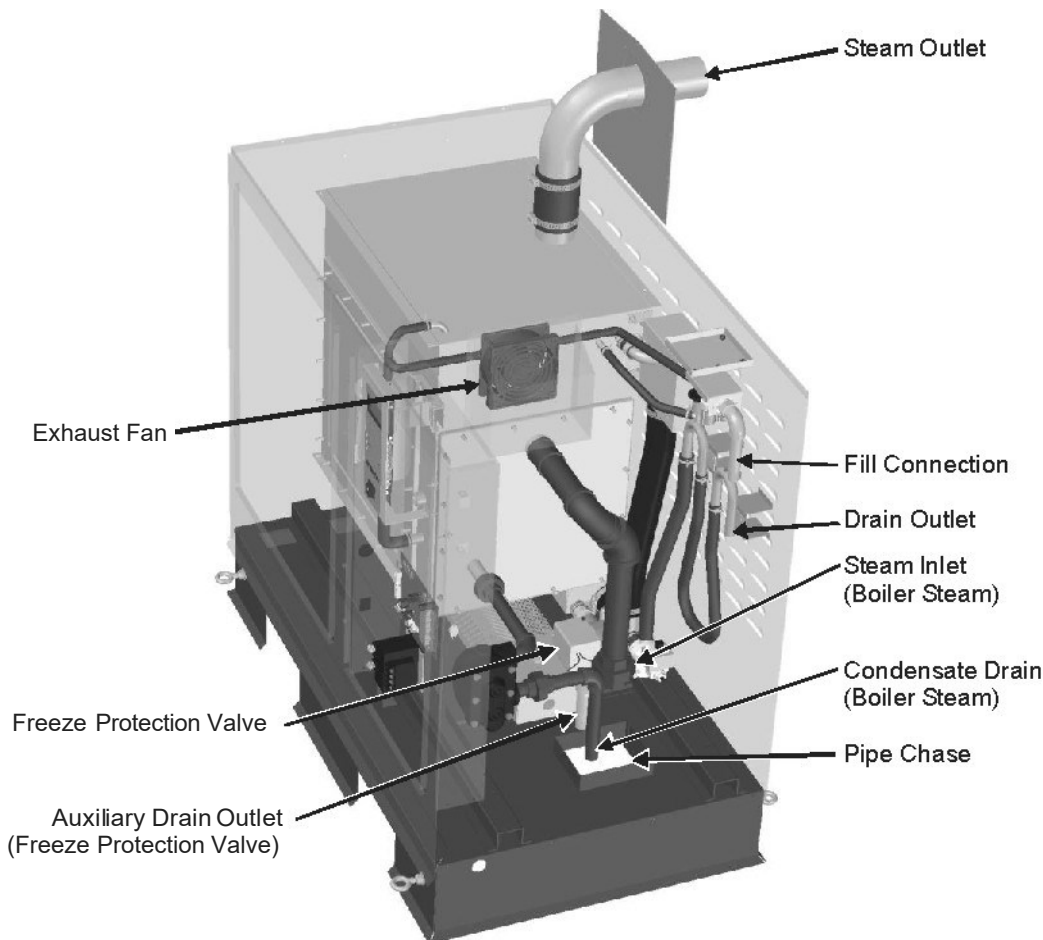
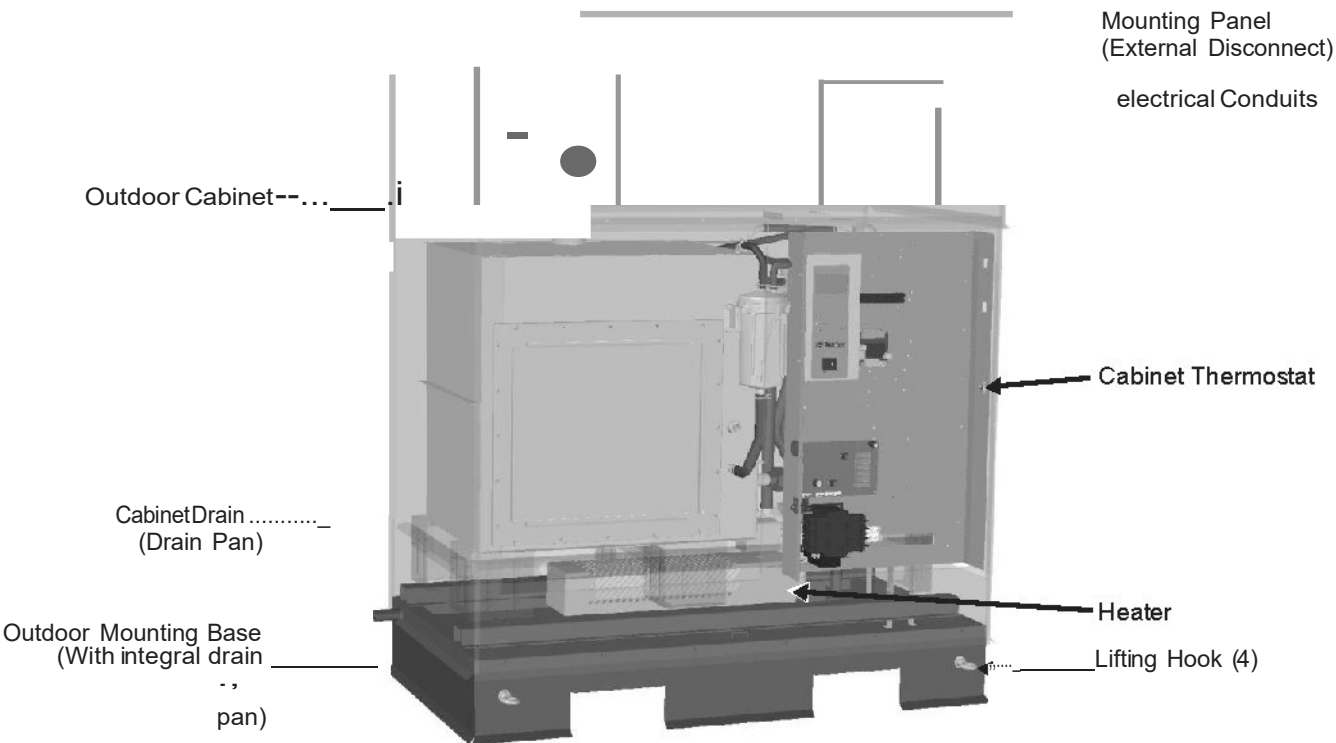


Figure2: Condair SETC Outdoor Humidifier Components

Description of Condair SETC Outdoor Specific Components

Note: See Humidifier Components on page 3 of the Condair SE Series Installation manual for a description of other Condair SE components.



Table 1: SETC Outdoor Humidifier Components

Component	Function of Component
Auxiliary Drain Outlet	Drains water from tank in case of pump failure or in case of fault or power failure if freeze protection valve is installed.
Cabinet Drain	Drain outlet for integrated cabinet drain pan (outdoor unit only). Drain to rooftop.
Cabinet Thermostat	Sensor that activates the fan if the cabinet temperature is too hot for the electronics.
Condensate Drain	Drains condensate formed from boiler steam in the heat exchanger(s). (routed to pipe chase).
Drain Outlet	Drain port used for draining water from the humidifier tank.
Electrical Conduits	Two sealed conduits which provide a way for bringing electrical power routed up through the pipe chase to an external disconnect.
Exhaust Fan	Cooling fan which is activated if the electrical cabinet gets too hot.
Fill Connection	1/2 in. NPT connection to the humidifier fill valve.
Freeze Protection Valve	A normally open valve part of the freeze protection package. It allows the tank to drain in case of power failure or in case of a fault when humidifier operation cannot keep the humidifier warm enough to prevent freezing.
Heater	Electrical cabinet heater used to keep electronics warm enough for operation and cold weather start up only.
Lifting Hooks	Hooks provided for lifting the humidifier.
Mounting Panel	A panel provided on the outside of the humidifier for mounting a dedicated external disconnect.
Outdoor Cabinet	An enclosure that provides protection from precipitation and allows the Condair SETC to be installed outdoors.
Outdoor Mounting Base	An integrated support for the humidifier which includes a drain pan (outdoor unit only), a pipe chase, and a means for curb mounting the humidifier.
Pipe Chase	An opening in the outdoor cabinet's drain pan which is used for routing electrical power, controls, boiler steam, boiler condensate, fill water, and drain water through the base of the humidifier.
Steam Inlet	Connection for boiler steam, it is connected to the heat exchangers.
Steam Outlet	Outlet for steam produced by the humidifier. Connect to steam line with steam hose.

Condair SETC Outdoor Models

The Condair SETC Outdoor with its Total Controller and state-of-the-art features and options is the most advanced outdoor steam exchange humidifier available. The Condair SETC Outdoor is available in capacities ranging from 100 lb/hr (45 kg/hr) to 1050 lb/hr (475 kg/hr). The Condair SETC Outdoor humidifiers are packaged in four different cabinets depending on their capacity. Figure 3: Condair SETC/P Models shows the configuration and relative size of the five different cabinets. Table 3 provides specifications for the Condair SETC/P product line.

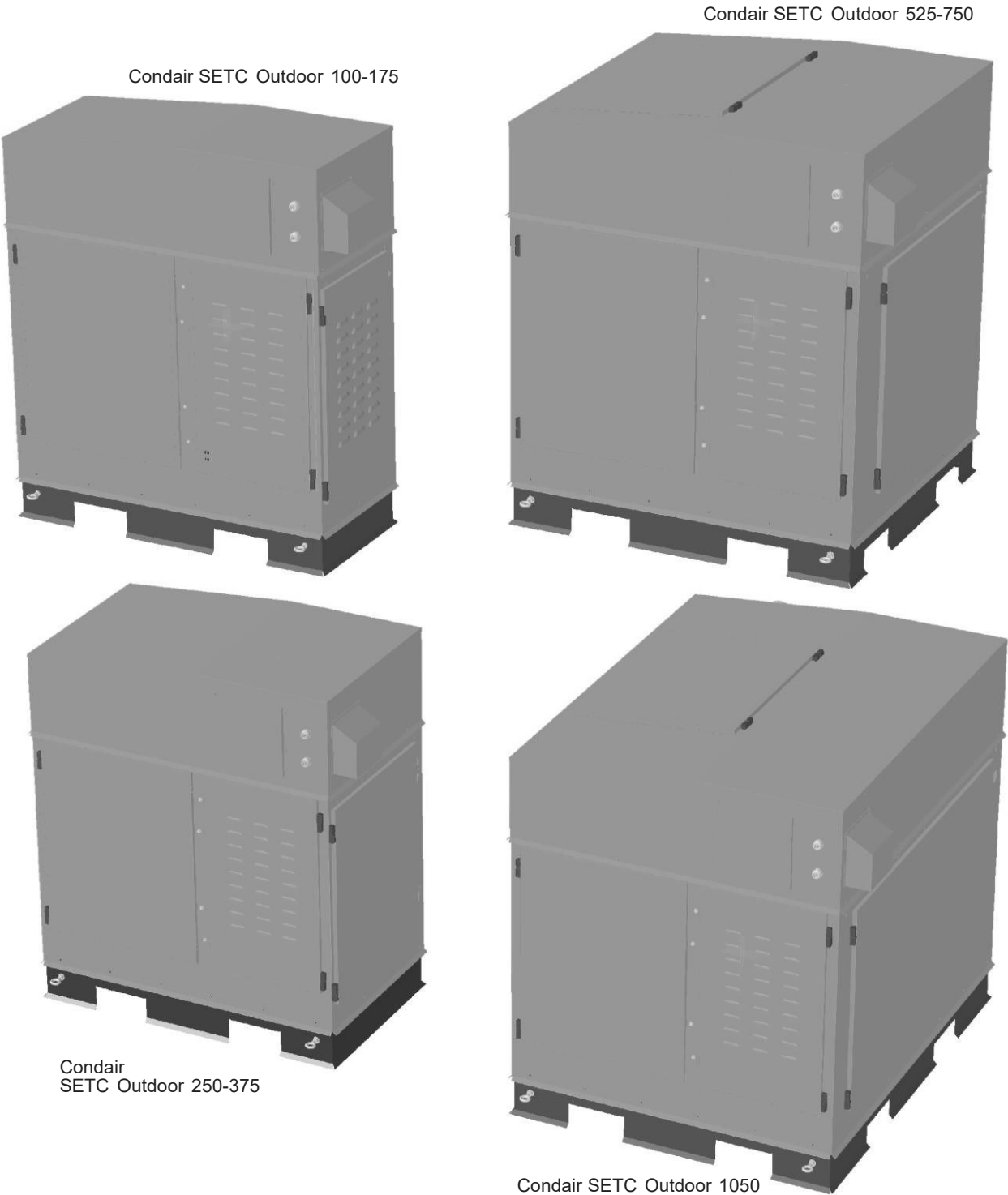


Figure 3: Condair SETC Outdoor Models

The Condair SE 50, 100, 175, 250, and 375 all have a single heat exchanger. The Condair SE 525 and 750 have two heat exchangers. The Condair SE 1050 has three heat exchangers. All models have a single pressurized steam inlet and condensate drain with internal manifold connecting separate heat exchangers if they are present.

Indoor Model

The Condair SE is available in two indoor models, the Condair SETC with total controller and a base Condair SEP model. The Condair SE Series Installation and Operation Manual provides complete information for installing and operating Condair SE Series Indoor humidifiers.

Options and Accessories

Condair provides a complete line of options and accessories for every humidification application. The following options and accessories are available and may have been delivered with your Condair SETC Outdoor humidifier. Refer to the installation instructions that came with the accessories for their proper installation and operation.

Table 2: Options and Accessories

Option / Accessory	Used For
Freeze Protection Package	Emptying the tank in case of fault or power failure to prevent freezing. (Factory installed)
Steam Distributors	Adding steam into air ducts
Remote Blower Pack	Adding steam into a space remote from the humidifier.
SAM-e Steam Distribution Manifold	Adding steam into air ducts where short absorption is required.
Digital or Analog Control Humidistats	Controlling the output of the humidifier based on sensed RH (can be mounted in the space being humidified or in the duct).
Digital RH Transducers	Communicating RH in a space or duct to the humidifier
Digital or Analog High Limit Humidistats	Preventing over humidification in a duct by shutting down or throttling down the humidifier when duct RH gets high.
Air Proving Switches	Insuring humidification only occurs when air is moving in a duct.
Links II (Condair SETC Only)	Connecting the humidifier to a building management interface. hardware allows control of the humidifier via BACnet, Lonworks, Johnson N2, or Modbus.
Online (Condair SETC Only)	User and factory monitoring and configuration of the humidifier via the internet.

Table 3: Condair SETC Outdoor Specifications

Model	Part No	Net/Full Weight lb (kg)	Amps A	Power KW	Max. Disconnect A	Voltage and Phase
100	2550081	267/423	5.4	0.65	15	Voltage 110-120 Phase 1
175	2550082	(121/192)	5.4	0.65	15	
250	2550083	355/599	5.4	0.65	15	
375	2550084	(161/272)	5.4	0.65	15	
525	2550085	529/992	9.6	1.15	15	
750	2550086	(240/450)	9.6	1.15	15	
1050	2550088	703/1384 (318/628)	13.8	1.65	20	

Note: See Table 3: Condair SETC/P Specifications and Table 4: Condair SETC/P Capacities and Water Consumption on page 7 of Condair SE Series Installation manual for remaining specifications

Installation

8 Typical Condair SETC Outdoor Installation

9 Location

10 Condair SETC Outdoor Curb

11 Installing on the Curb

12 Plumbing

13 Freeze Protecting Water Supply

14 Boiler Steam and Boiler Condensate Return

15 Steam Lines and Condensate Returns

16 Electrical

17 External Controls

17 Optional Outdoor Temperature Reset

17 CV Valve Actuator Wiring

17 Remote Relay Board Wiring

17 Staged Modulation Wiring

17 Options and Accessories

17 Remote Blower Pack

18 Drain Water Cooling (External)

Typical Condair SETC Outdoor Installation

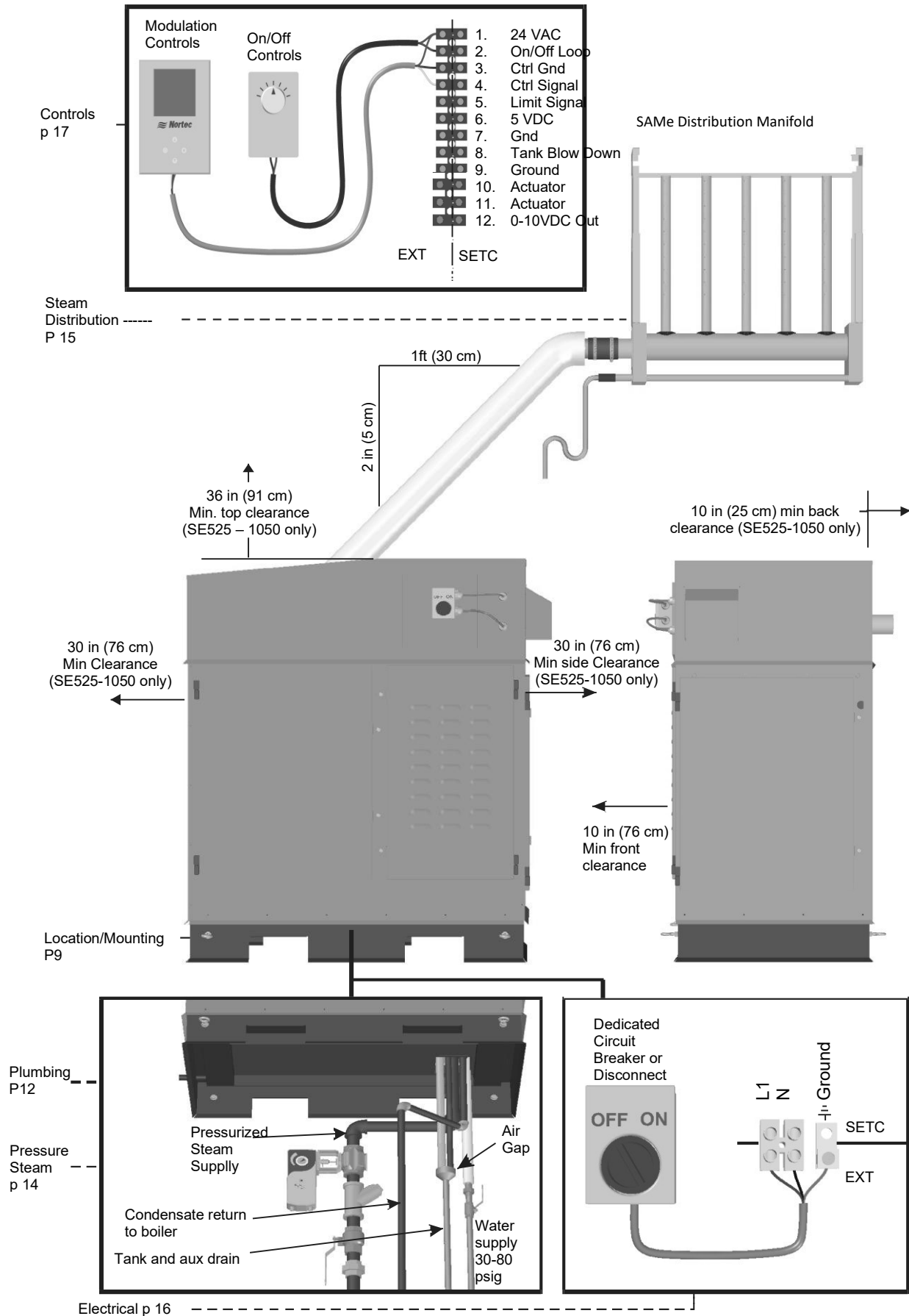


Figure 4: Typical Humidifier

Location

The Condair SETC Series Outdoor Models are designed to be rooftop mounted on a roof curb (by others). When properly installed the outdoor enclosure will provide protection from rain, wind, and snow in areas with ambient temperature -40 to 104°F (-40 to 40°C) and relative humidity $0 - 100\%$ (non condensing). All models include a ventilation package to prevent overheating in warm months, and a freeze protection package to prevent freezing in cold months.

- Refer to Figure 5: Installation Location / Clearance for minimum clearance requirements and to Table 3: Condair SETC Outdoor Specifications for minimum structural requirements. Ensure mounting surface is strong enough to support the full weight of the humidifier and accessories.
- The Condair SETC Outdoor is designed to be mounted on a roof curb. Use pipe chase in enclosure base for routing of services to the humidifier from below. See Figure 6: Condair SETC Outdoor Roof Curb and Table 4: Condair SETC Roof Curb Depth (Dimension A) for roof curb dimensions and pipe chase location..
- Install in location where electrical power, boiler steam, and drain can be connected to the humidifier.
- DO NOT locate the humidifier any further then absolutely necessary from the steam distributor location as net output will be reduced as a result of heat loss through the steam line.
- Clearance dimensions shown are for reference only and are the minimum required for maintenance of the humidifier. Consult local and national codes before final location and installation. Condair does not accept responsibility for installation code violations.

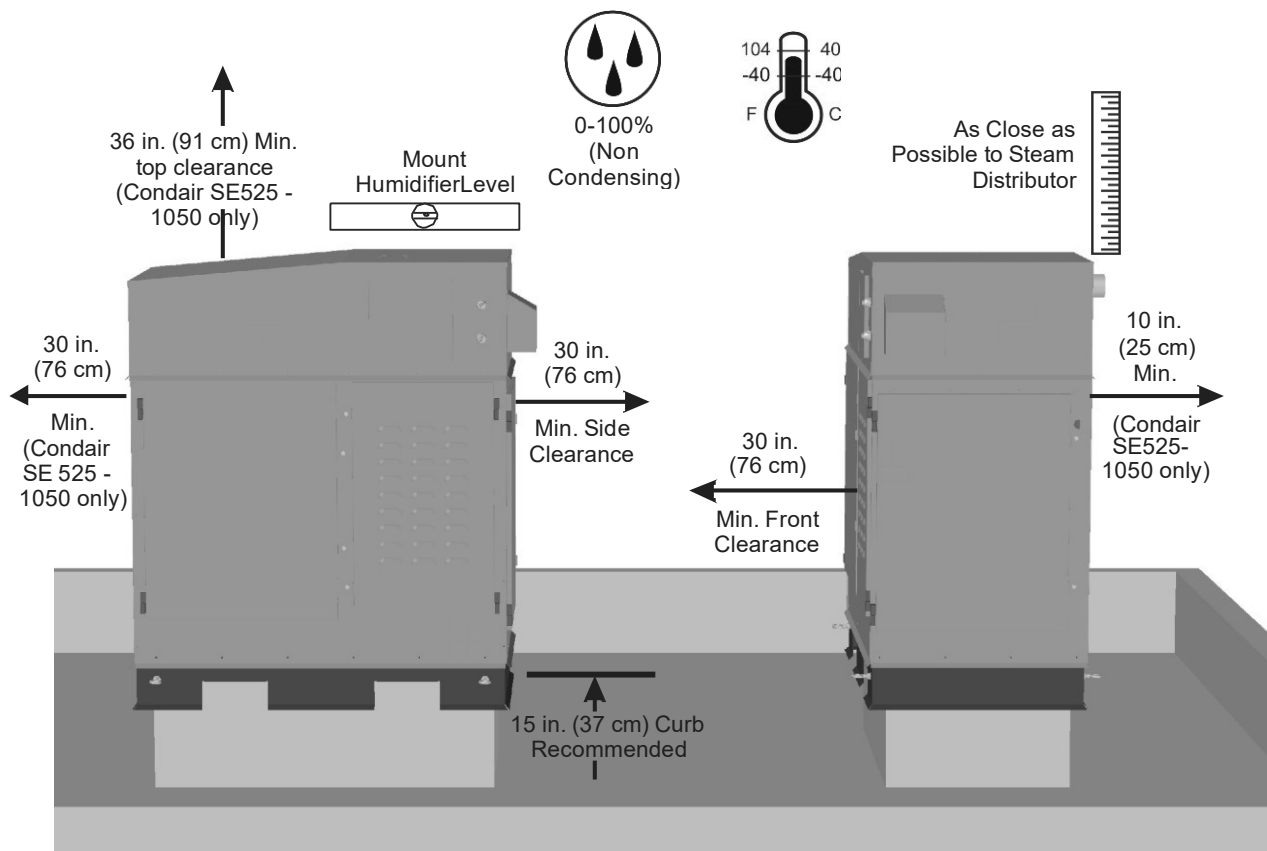


Figure 5: Installation Location / Clearance

- Seal building after plumbing to ensure that building pressure remains as intended.
- Avoid installing the humidifier in an area where building exhaust may enter the cabinet through ventilation louvers. A minimum clearance of 10ft (3m) from mechanical exhaust outlets is recommended.
- Install so that ventilation louvers are not obstructed and cannot be blocked by accumulation of ice and snow.

Caution: When installing the Condair SETC Outdoor in conditions where freezing temperatures may occur ensure that freeze protection guidelines are followed. See Freeze Protecting Water Supply on page 13.



Note:

- Cut-outs in the base of the unit are designed to allow lifting with a forklift.
- Four removable lugs on the base are provided to allow the humidifier to be craned into position. Protect the cabinet from cable/strap/chain damage while lifting.



SETC Outdoor Curb

The base of the Condair SETC includes a drain pan with a pipe chase to route water, drain, boiler steam, boiler steam condensate, control wiring, and primary power wiring. The roof curb should be designed to support the base and allow services to be routed to the humidifier through the pipe chase.

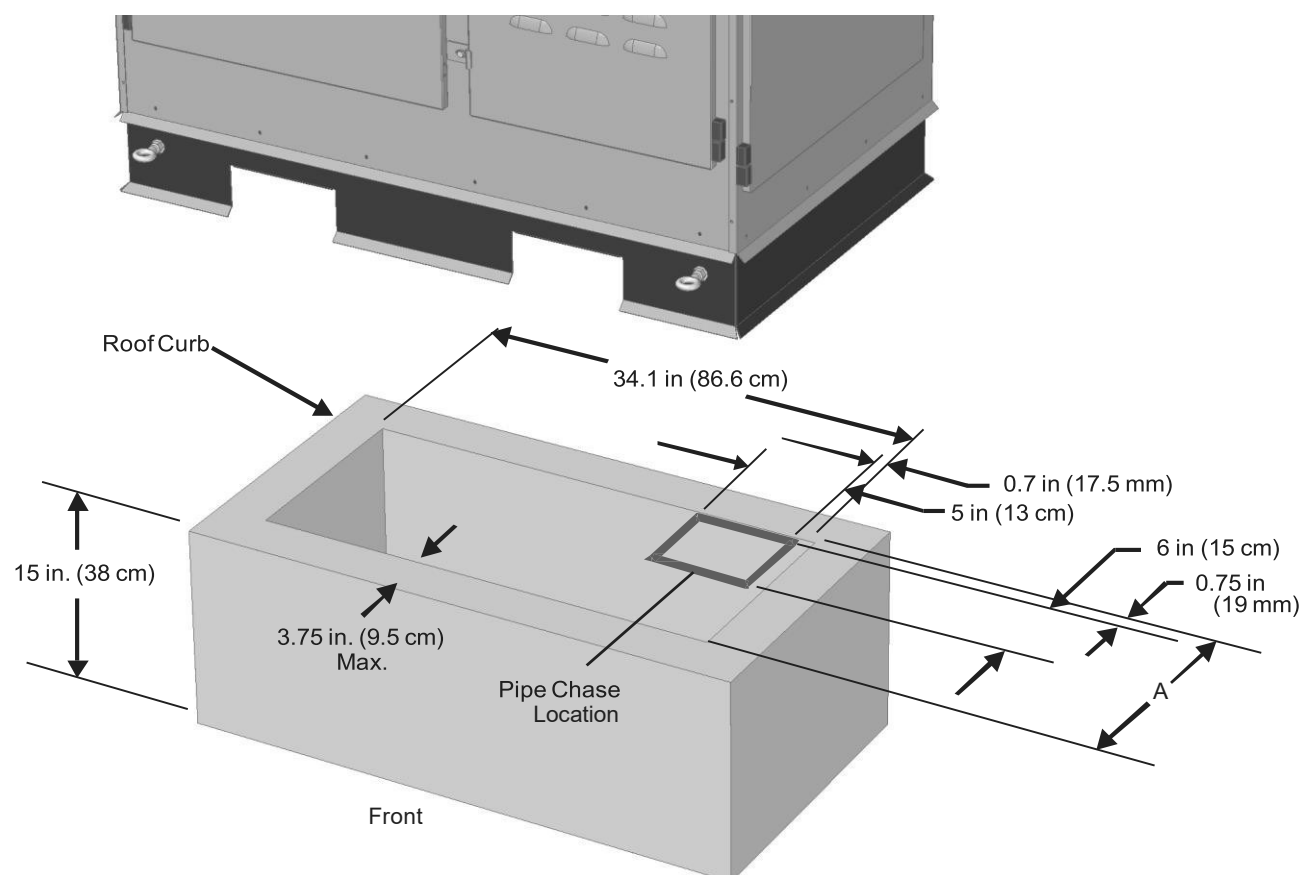


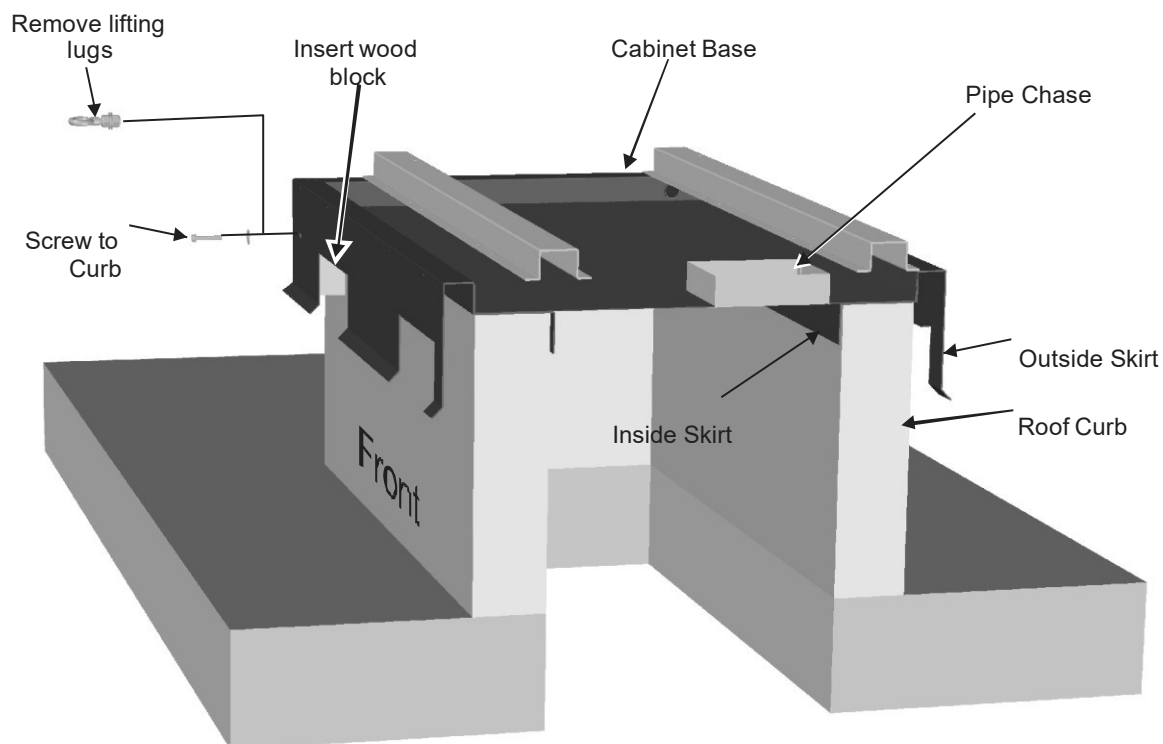
Figure 6: Condair SETC Outdoor Roof Curb

Table 4: Condair SETC Roof Curb Depth (Dimension A)

Model	A (Inside Curb Depth) In (cm)
100	8.6 (28 cm)
175	8.6 (28 cm)
250	15 (38 cm)
375	15 (38 cm)
525	30.6 (78 cm)
750	30.6 (78 cm)
1050	46.3 (118 cm)

Installing on the Curb

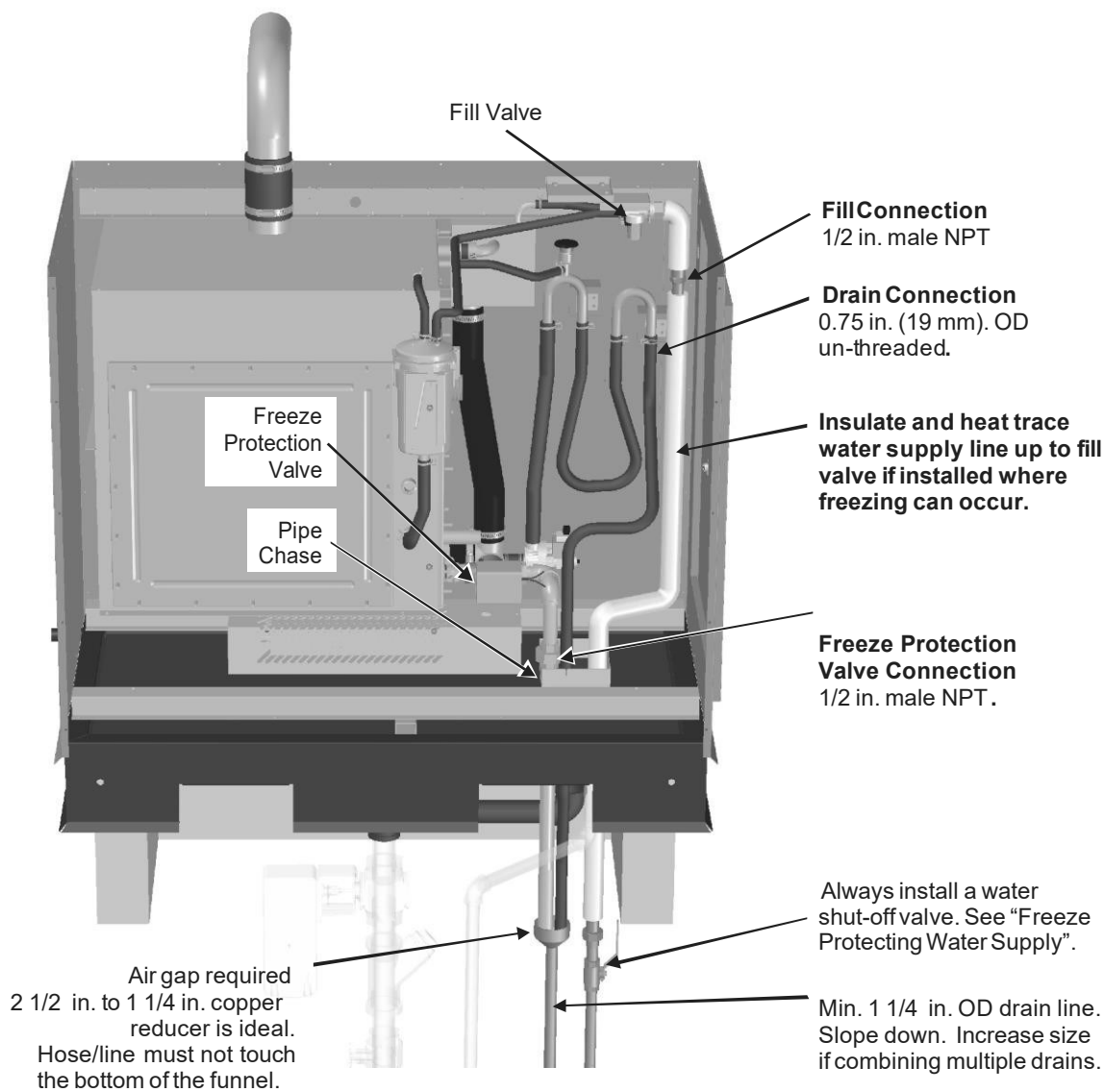
- If desired sealing material such as caulking or a gasket can be laid on the top of the curb prior to lifting the Condair SETC into place.
- Use the removable lugs installed in the base of the humidifier to lift it into place. Ensure that the cable/chain/straps used for lifting do not come into contact with and damage the cabinet. The inside skirt of the base must fit inside the roof curb.
- To secure the Condair SETC in place remove the four lifting lugs and insert shims or blocks to fill any gap between the outside skirt of the base and the curb. Drive screws through the four holes to secure the unit to the curb.
- If the building is positively or negatively pressured the pipe chase opening or the roof curb opening should be closed around the piping to prevent the building drawing cold air in or exhausting warm air out through the Condair SETC cabinet.



Cross section of curb and cabinet base from right side

Figure 7: Installing on the Curb

Plumbing



*Pipe, unions, insulation, heat trace, and water shut-off valve not supplied by Condair.

Figure 8: Condair SETC Outdoor Water Supply and Drain Connection

Caution:

- See Plumbing on page 14 of Condair SE Series Installation Manual for additional plumbing requirements. This Information provided only to show routing and location of plumbing connections on Condair SETC outdoor model.
- When installing the Condair SETC Outdoor in conditions where freezing temperatures may occur follow instructions in Freeze Protecting Water Supply on page 13 to prevent damage in case of power failure or humidifier fault.
- **Internal heaters will not keep the Condair SETC from freezing in cold climates. They are intended to maintain electronics at a minimum operating temperature for cold weather startup.**



Note: The freeze protection valve is normally open and will drain the tank whenever the humidifier is turned off or faults. Close manual shut off valve while troubleshooting.



Freeze Protecting Water Supply



Caution:

When installing the Condair SETC Outdoor in condition where the temperature may drop below 0°C (32 °F) always follow these guidelines to protect the water supply line from freezing. A frozen and burst water line can cause serious damage to property.

- Heat trace and insulate the water supply line all the way up to the fill valve.
- In case of power shut off or power failure the water supply line will not be protected from freezing by the heat trace. Water trapped in the supply line may freeze and cause damage. Install the valve system outlined below to shut off water inside the building and drain any water in the supply line. Valves, fittings, insulation and heat trace shown are not supplied by Condair.

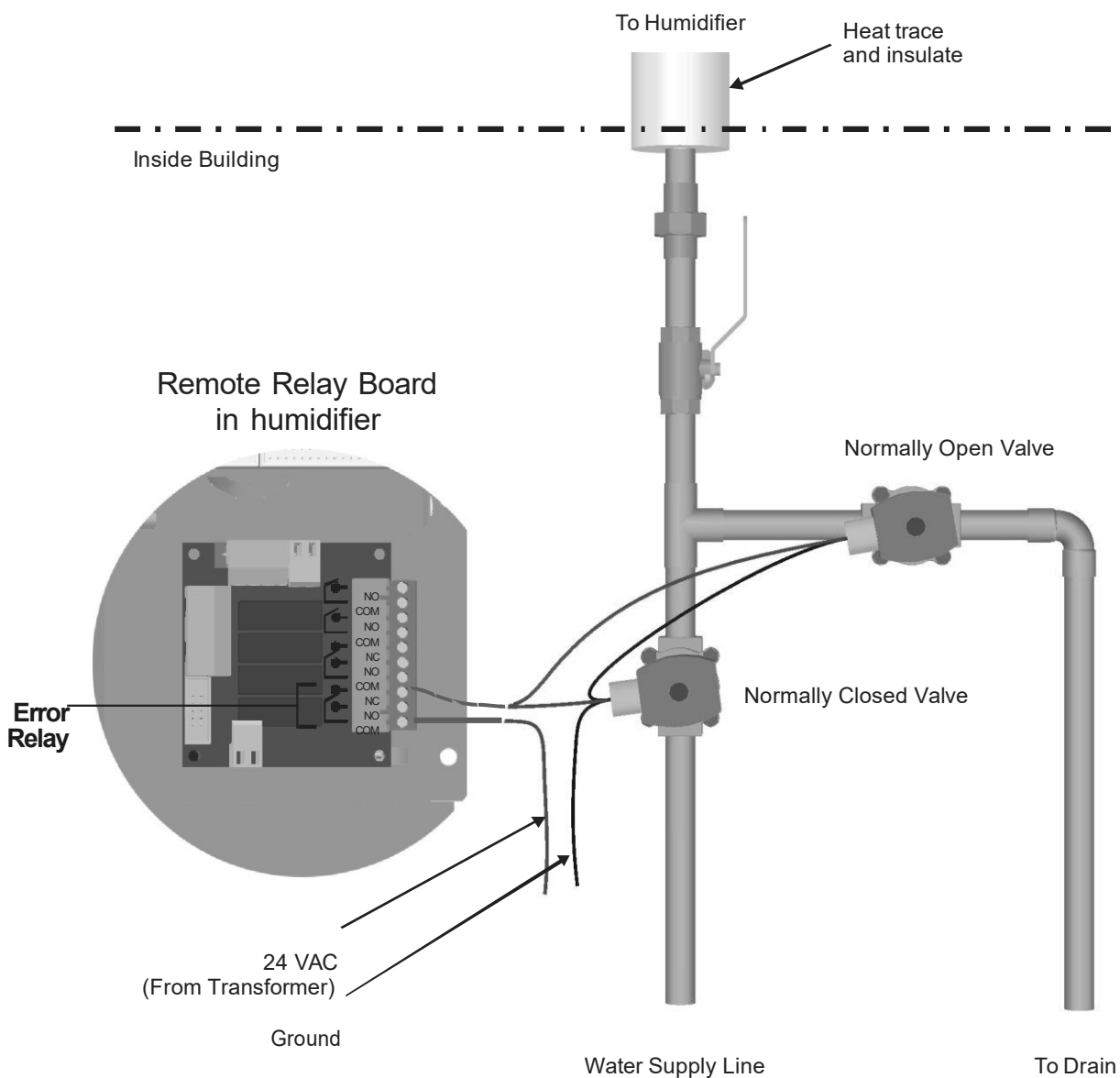


Figure 9: Freeze Protecting Water Supply

Boiler Steam and Boiler Condensate Return

Caution:

See Boiler Steam and Boiler Condensate Return on page 15 of SE Series Installation Manual for additional steam line installation requirements. This information provided only to show routing and location of connections on Condair SETC Outdoor model.

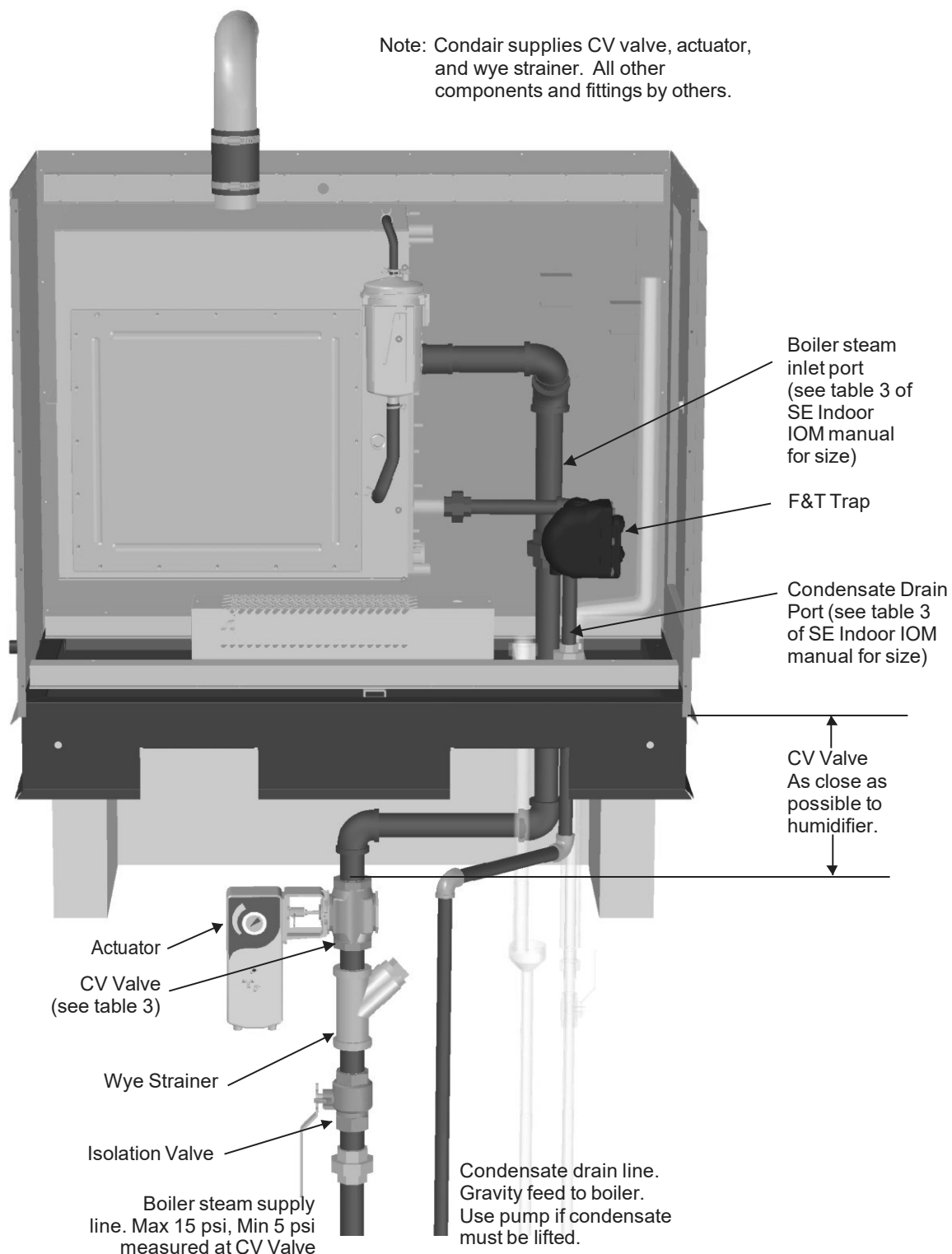


Figure 10: Condair SETC Outdoor Boiler Steam and Condensate Connection

Steam Lines and Condensate Returns

With the following exceptions the Condair SETC Outdoor steam lines and condensate returns should be installed as shown in the Condair SE Series Installation Manual. The size of the outlets and the number of outlets is given in Table 5: Recommended Steam Line Material on page 17 of the Condair SE Series Installation Manual.

- The Steam outlet(s) of the Condair SETC Outdoor is from the back of the humidifier and does not require 12 in. (30 cm) of vertical steam run immediately after the humidifier. The steam line may be routed directly down or horizontally from the outlet. See Figure 11: Condair SETC Outdoor Steam Outlet.
- The Condair SETC Outdoor steam line must be insulated in all cases even for very short runs.

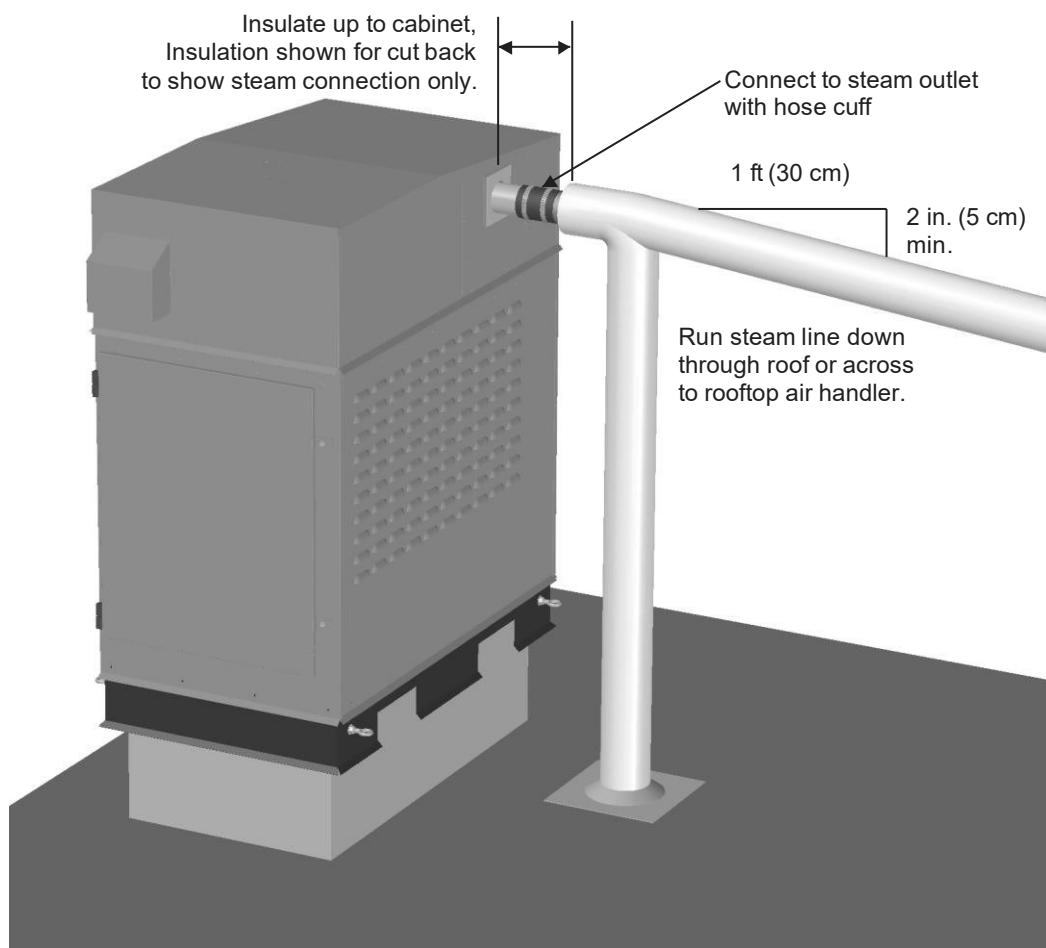
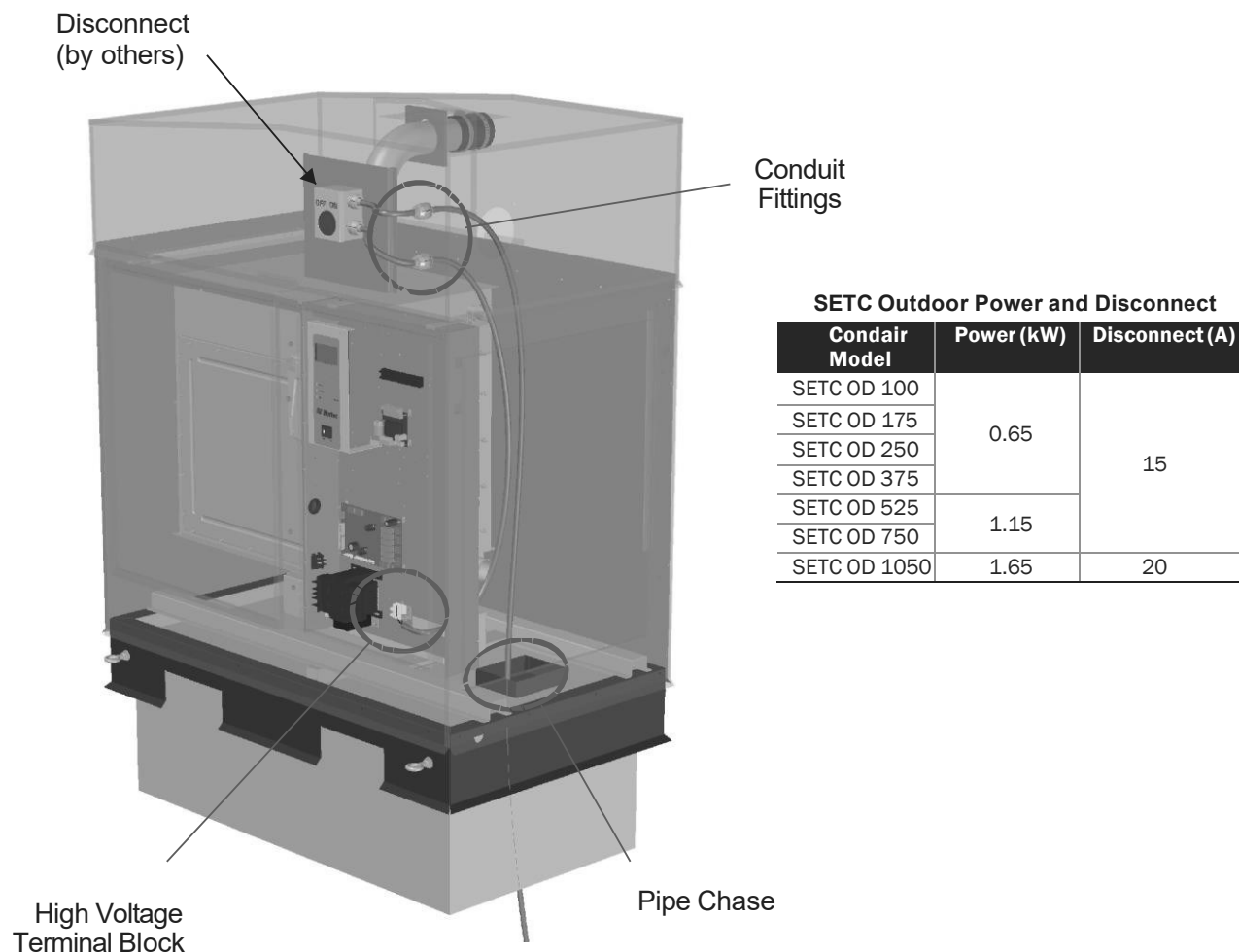


Figure 11: Condair SETC Outdoor Steam Outlet

Electrical

Caution:

- Wiring to be performed by a licensed Electrician.
- All SE humidifiers operate on 120 VAC, single phase, 60 HZ power. Refer to specification label for power requirements.



Note:

- 1 Dedicated external fused disconnect must be installed. Fusing must not exceed max circuit protection as indicated on the specification label.
- 2 Ensure that adequate power is available to carry full humidifier amp draw as indicated on the specification label.
- 3 Primary power may be routed up through pipe chase and conduit fittings or from roof top source.
- 4 All wiring to be in accordance with national and local electrical codes.

Condair SETC Outdoor Primary Power Wiring

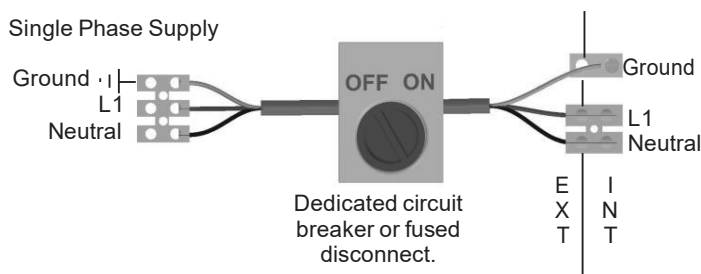


Figure 12: Primary Power Connection

External Controls

The control wiring of the Condair SETC Outdoor is identical to the Condair SE Indoor with the exception that the wiring from controls must be routed to the humidifier's control terminal strip through the pipe chase. See External Controls on page 23 of the Condair SE Series Installation manual for full information on connecting external controls to the Condair SETC Outdoor.

Optional Outdoor Temperature Reset

The outdoor temperature reset should be used in cold climates where there is risk of condensation forming on external walls, windows, and trim. The Temperature reset function is part of all Condair Digital controls and should be installed as described in Optional Outdoor Temperature Reset on page 28 of the Condair SE Series Installation Manual.

CV Valve Actuator Wiring

Wire the CV valve actuator as described in CV Valve Actuator Wiring on page 29 of the Condair SE Series Installation Manual.

Remote Relay Board Wiring

Wire the remote relay board as described in Remote Relay Board Wiring on page 30 of the Condair SE Series Installation Manual.

Staged Modulation Wiring

Wire the humidifiers as described in Staged Modulation Wiring (Condair SETC Only) on page 31 of the Condair SE Series Installation Manual.

Options and Accessories



Note:

For installation of options and accessories follow the instructions that are provided with them.

Remote Blower Pack

Remote blower packs can be installed with the Condair SE Outdoor for applications where steam for humidification must be introduced directly into the space being humidified. For instructions on installing the remote blower pack refer to the installation instructions supplied with it. The steam line and condensate return instructions provided in this and the Condair SE Series Installation Manual are also applicable to remote mounted blower packs.

The blower packs include a safety relay which should be used to prevent the humidifier from operating if the blower packs do not have power. Wire humidifier security loop in series through all blower packs and other On/Off controls.

Drain Water Cooling (External)

Pneumatic and electric drain water coolers are available from Condair for installation outside the humidifier or on condensate drains from steam traps, distributors, and SAM-e headers. If condensate cannot be routed back to the humidifier tank via the humidifier's fill cup then an external drain water cooler may be required to meet regulations restricting the temperature of hot water that can be fed to drain. The external drain water cooler is only available for field installation.

Troubleshooting

20 Condair SETC Outdoor Wiring Diagram

For all other troubleshooting see chapter on troubleshooting in the Condair SE Series Installation Manual.

SETC Outdoor Wiring Diagram

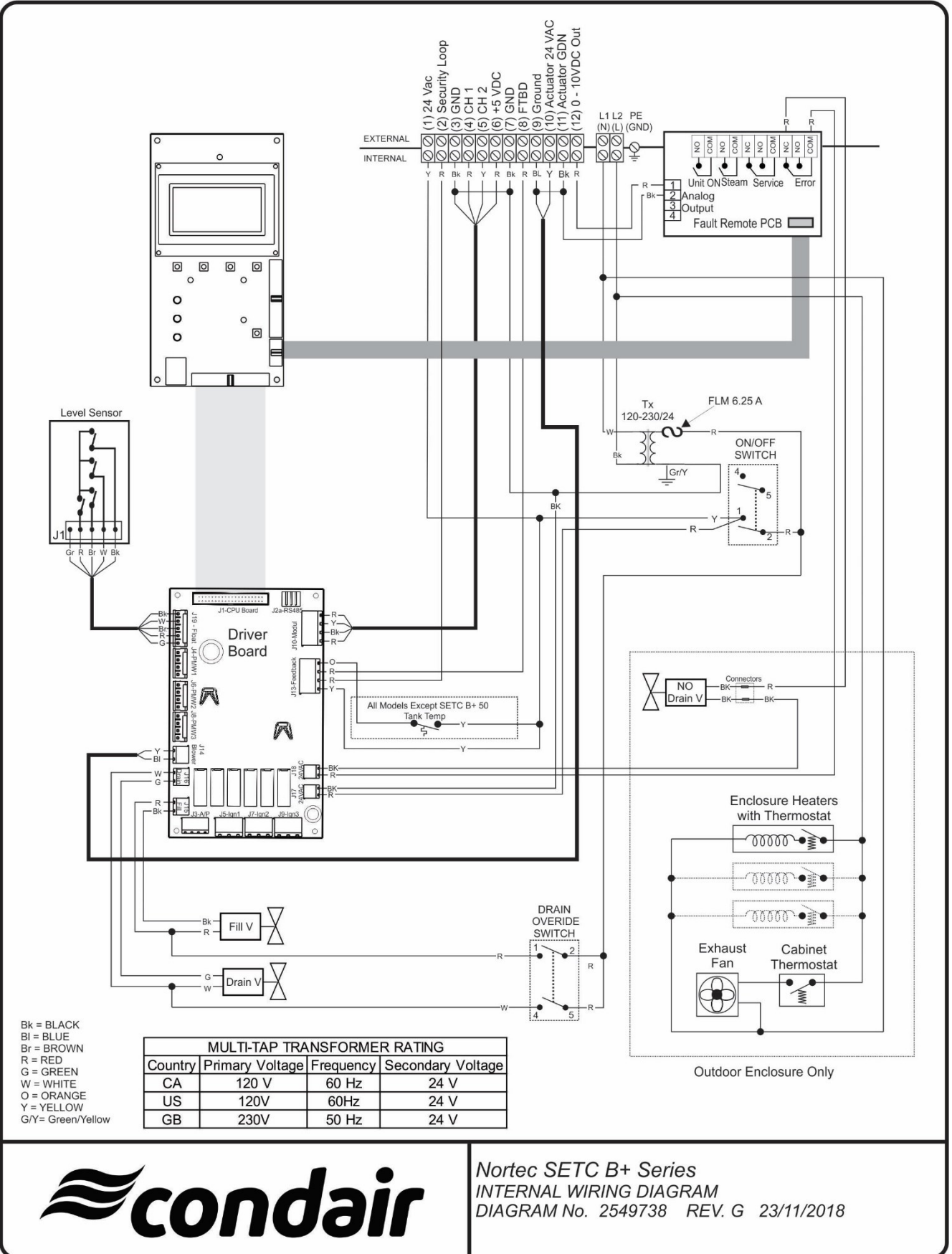


Figure 13: SETC Outdoor Wiring Diagram

Spare Parts

- 22 Distributor Spare Parts**
- 23 Condair SETC Outdoor Plumbing Parts**
- 25 Condair SETC Outdoor Cabinet and Electrical Parts**
- 28 Warranty**

Distributor Spare Parts



Figure 14: Distributor Exploded View and Spare Parts

Condair SETC Outdoor Plumbing Parts

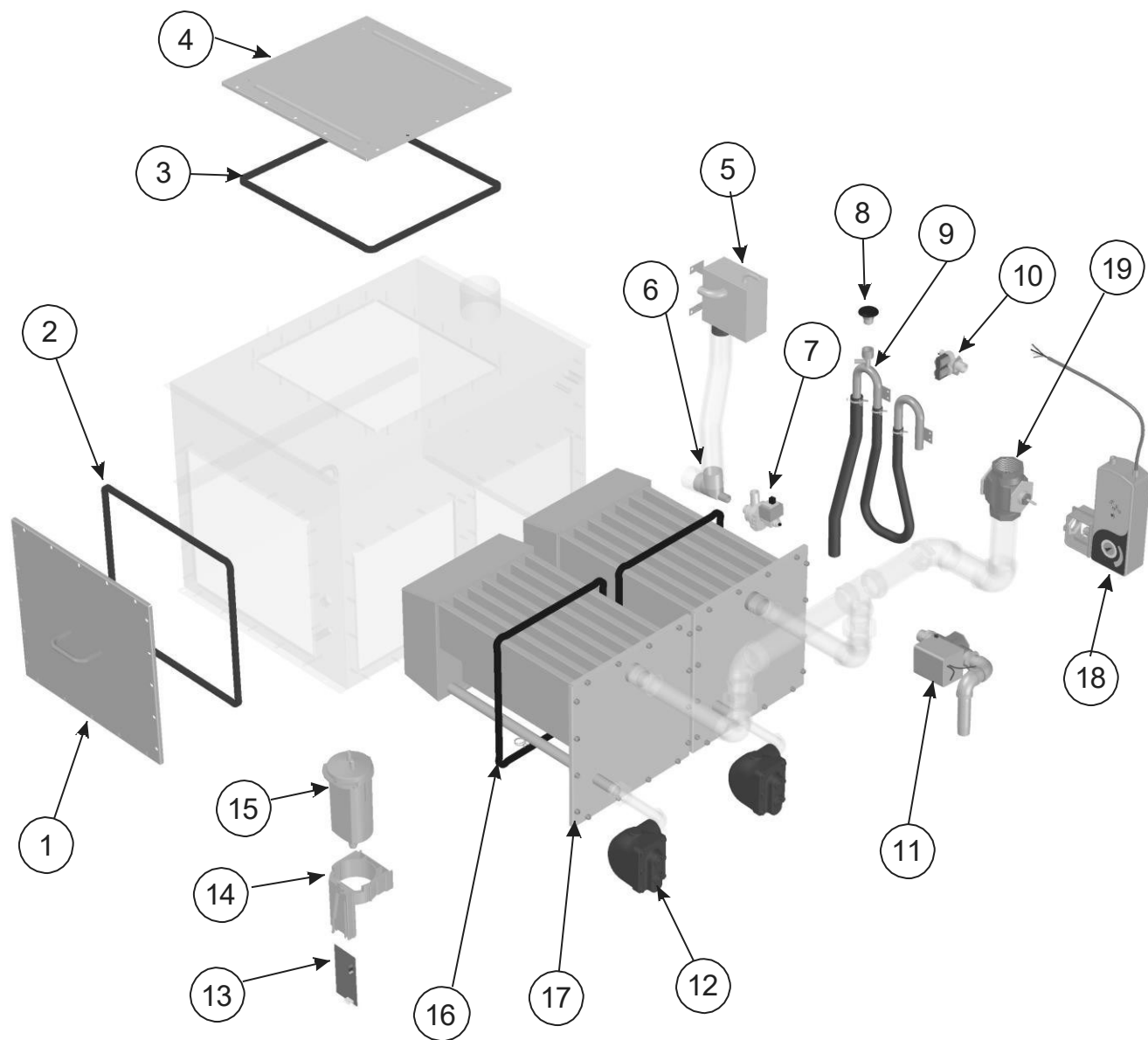


Figure 15: Condair SETC 100-1050 Plumbing Parts

Table 5: Condair SETC B+ Outdoor Plumbing Parts List

Item	Description	Part No.	100	175	250	375	525	750	1050
1	Cover Plate Assy.	2570309	1	1	1	1	1	1	1
2	O-ring, Clean Out Port	2583767	1	1	1	1	1	1	1
3	O-ring, Clean Out Port,	2583767					1	1	2
4	Cover Plate, Clean Out Port	2547539					1	1	2
5	Fill Box Assy.	2597682	1	1	1	1	1	1	1
6	Lower Mixing Box	1506749	1	1	1	1	1	1	1
7	Drain Pump 24v 60 Hz	2584503	1	1	1	1	1	1	1
8	Vacuum Break Valve 1/2" NPT	2581345	1	1	1	1	1	1	1
9	P-Trap, Outdoor	2547342	1	1	1	1	1	1	1
10	Dual Fill Valve 10.0 l/min & 0.35 l/min	2573528	1	1	1	1	1		
	Dual Fill Valve, 17.0L/Min & 0.35L/Min	2597636						1	1
11	Freeze Protect Valve Assembly Outdoor	1509014	1	1	1	1	1	1	1
12	Steam Trap, 15psi	2584379	1	1	1	1	2	2	3
13	Float Board	2573846	1	1	1	1	1	1	1
14	Float Chamber Mounting Bracket	2598137	1	1	1	1	1	1	1
15	Float Chamber	2573513	1	1	1	1	1	1	1
16	O-ring, Heat Exchanger, Large	2583768			1	1	2	2	3
	O-ring, Heat Exchanger, Mini	2583769	1	1					
17	Heat Exchanger Kit, Single	2581131			1	1	2	2	3
	Heat Exchanger Kit, Mini	2581132	1	1					
18	0-10VDC BGV L+Act. For Stem Down Valve	2612837	1	1		1	1	1	
	0-10VDC Reduce 14Cv to 12Cv BGV L+Act.	2612912			1				
	Valve,CV77, 2way Control c/w Actuator	1508472							See Item #19 for qty
19	Belimo Valve 5.5Cv Bronze Body, SS Tr	2612434	1						
	Belimo Valve 10Cv Bronze Body, SS Tr	2612436		1					
	Belimo Valve 14Cv Bronze Body, SS Tr	2612810			1				
	Belimo Valve 20Cv Bronze Body, SS Tr	2612437				1			
	Belimo Valve 28Cv Bronze Body, SS Tr	2612440					1		
	Belimo Valve 40Cv Bronze Body, SS Tr	2612441						1	
	SP Valve,CV77, 2way Control c/w Actuator	2576616							1

Condair SETC Outdoor Cabinet and Electrical Parts

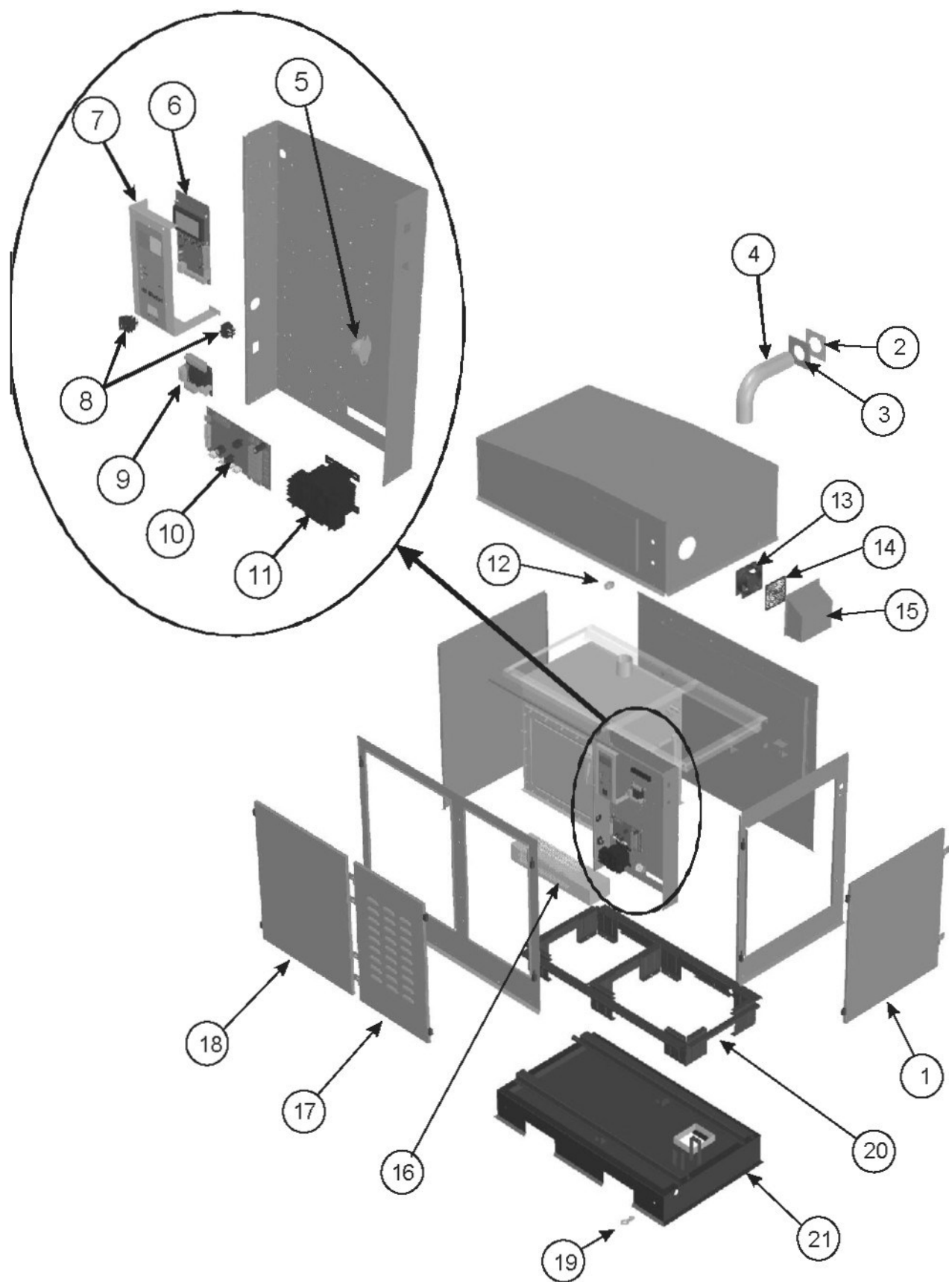


Figure16: Condair SETC/P100- 050 Cabinet and Electrical Parts

Table 6: Condair SETC B+ Outdoor Cabinet and Electrical Parts List

Item	Description	Part No.	100	175	250	375	525	750	1050
1	Service Door, Mini	1507801	1	1					
	Service Door, Double	1507860					1	1	
	Service Door	1507800			1	1			2
2	Gasket Steam Line 1.5 in.	1508105	1						
	Gasket Steam Line 3 in.	1507872		1	1				
	Gasket Steam Line 4 in.	1507871				1	1	1	2
3	Plate Cover 1.5 in.	1508106	1						
	Plate Cover 3 in.	1507870		1	1				
	Plate Cover 4 in.	1507810				1	1	1	2
4	Steam Line 1.5 Outdoor	1508015	1						
	Steam Line 3 Outdoor	1508049		1	1				
	Steam Line 4 Outdoor	1508048				1	1	2	2
5	Thermostat On/Off	2598433	1						
6	Kit Processor Board SE	2553861	1						
Not Shown	Cable , 40 Pin Ribbon	2583771	1						
7	Panel Processor Display Outdoor	2544255	1						
Not Shown	Membrane, Condair	1509735	1						
8	Switch Rocker DPST	2585310	2						
9	Remote Fault Indication Board SETC	2595745	1						
Not Shown	Cable, 10pin Ribbon	2574174	1						
10	PCB Driver Board	2581342	1						
11	Transformer,120/240V,24V ,150VA	1504859	1						
12	Conduit Fitting,1/2	1506259	2						
13	Fan Axial 108 cfm	1506904	1						
14	Fan Cover	1505469	1						
15	Hood Fan Outdoor	1507811	1						
16	Pump house heater	2597633	1						
17	Access Door, Electronics, Outdoor	1507801	1						
18	Access Door, Tank, Outdoor	1507800	1						
19	Base Assembly	Reference - Contact Factory							
20	Base Assembly Outdoor	Reference - Contact Factory							

Warranty

Condair Inc. or Condair Ltd. (depending on the entity that supplied the product, and hereinafter collectively referred to as CONDAIR) warrant for a period of two years after installation or 30 months from the manufacturer's ship date, whichever date is earlier, that CONDAIR's manufactured and assembled products, not otherwise expressly warranted, are free from defects in materials and workmanship. Notwithstanding the foregoing, the products listed below have an alternate warranty period:

- GS/GSTC Series heat exchanger(s) are warranted to be free from defects in materials and workmanship for a period of 3 years from installation or 40 months from the manufacturer's ship date, whichever is earlier.
- SAM-e Short Absorption Manifolds, except for the coupling seals, are warranted to be free from defects in materials and workmanship for a total period of 10 years from the manufacturer's ship date.
- Humilife RH humidifiers are warranted to be free from defects in materials and workmanship for a period of 5 years from the manufacturer's ship date. CONDAIR may, at its discretion, replace individual components or Humilife RH units as a whole.
- Spare Parts used for repairs are warranted for the balance of the term of the warranty on the original humidifier or 90 days, whichever is longer.
- No warranty is made against corrosion, deterioration, or suitability of substituted materials used as a result of compliance with government regulations.

CONDAIR's obligations and liabilities under this warranty are limited to furnishing replacement parts to the customer, F.O.B. CONDAIR's factory. The replacement parts are warranted for the balance of the term of the warranty on the original humidifier or 90 days, whichever is longer. Procedure:

1. Customer Requests Warranty as per instructions on the Condair Warranty Form.
2. CONDAIR reviews the warranty claim and will respond in one of two ways:
 - a. Warranty Accepted – Replacement Part or credit granted.
 - b. Warranty Declined – Response with justification will be provided to the customer.
3. In some cases, CONDAIR may request the part to be returned, freight prepaid by the customer, as part of the warranty acceptance or warranty determination process. Some reasons include:
 - a. Part must be analyzed to determine the root cause of failure.
 - b. Part must be returned to the supplier for claim/investigation.

When parts are requested to be returned, replacement parts will be sent by CONDAIR to the customer against an invoice from CONDAIR paid by the customer. The cost of the replacement parts will be reimbursed to the customer with a credit note after the parts are received and analyzed by CONDAIR, if the warranty is accepted.

The warranties set forth herein are in lieu of all other warranties expressed or implied by law. No liability whatsoever shall be attached to CONDAIR until said products have been paid for in full and then said liability shall be limited to the original purchase price for the product. Any further warranty, with the exception of a purchased extended warranty described below, must be in writing, and signed by an officer of CONDAIR.

CONDAIR makes no warranty and assumes no liability unless the equipment is installed in strict accordance with the installation manual in effect at the date of purchase, and by properly qualified and licensed professionals capable of installing such equipment.

CONDAIR makes no warranty and assumes no liability whatsoever for consequential damage or damage resulting directly from misapplication, incorrect sizing, or lack of proper maintenance of the equipment.

CONDAIR makes no warranty and assumes no liability whatsoever for damage to the products, humidifier, supply lines, drain lines, steam distribution systems, or the building as a whole caused by freezing.

CONDAIR reserves the right to change the design, specifications, and performance criteria of its products without notice or obligation.

Extended Warranty

Extended warranties are available to purchase under the conditions listed above. Extended warranties must be purchased at the time of the original equipment order.



www.condairparts.com

Buy authentic Condair
parts factory direct.

Would you recommend Condair?
Take our two question survey.



U.S.A.

1021 6th Street
Racine, WI 53403

CANADA

2740 Fenton Road
Ottawa, Ontario K1T 3T7

TEL: 1.866.667.8321

EMAIL: na.info@condair.com

WEBSITE: www.condair.com

